

**DATASHEET**

**LAP3 Rabbit Polyclonal Antibody**

CAT. NO. APA13052

**KEY FEATURES**

Target	LAP3	Source / Host	Rabbit
Reactivity	Human, Mouse, Rat	Clonality	Polyclonal
Applications	WB	Conjugation	Unconjugated
Form / Buffer	Liquid in 0.42% Potassium phosphate, 0.87% Sodium chloride, pH 7.3, 30% glycerol, and 0.01% sodium azide.		Storage at -20°C

**BACKGROUND**

Cytosolic metallopeptidase that catalyzes the removal of unsubstituted N-terminal hydrophobic amino acids from various peptides. The presence of Zn(2+) ions is essential for the peptidase activity, and the association with other cofactors can modulate the substrate specificity of the enzyme. For instance, in the presence of Mn(2+), it displays a specific Cys-Gly hydrolyzing activity of Cys-Gly-S-conjugates. Involved in the metabolism of glutathione and in the degradation of glutathione S-conjugates, which may play a role in the control of the cell redox status.

**APPLICATION**

To ensure optimal assay performance, AREX recommends conducting reagent titration tailored to each testing system for optimal detection results.

WB	1:500 - 1:1000
----	----------------

\*Results are sample-specific. Please refer to your local assay conditions and test parameters for reference.

**PRODUCT OVERVIEW**

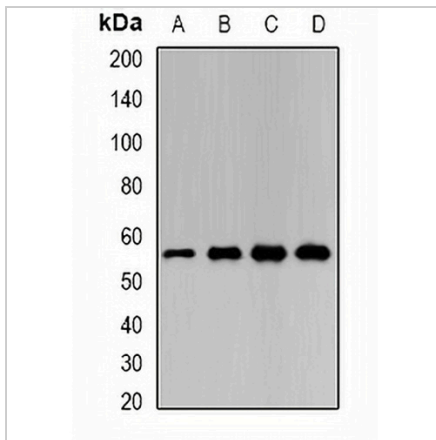
Description	Rabbit polyclonal antibody to LAP3
Specificity	Recognizes endogenous levels of LAP3 protein.
Antibody Type	Primary antibody
Immunogen	Recombinant fusion protein of human LAP3
Purification	The antibody was purified by immunogen affinity chromatography.
Molecular Weight	Predicted: 52; Observed: 56 kD
Form/Buffer	Liquid in 0.42% Potassium phosphate, 0.87% Sodium chloride, pH 7.3, 30% glycerol, and 0.01% sodium azide.
Alternative Names	LAPEP; PEPS; Cytosol aminopeptidase; Leucine aminopeptidase 3; LAP-3; Leucyl aminopeptidase; Peptidase S; Proline aminopeptidase; Prolyl aminopeptidase
Gene Symbol	LAP3
Entrez Gene	51056(Human); 66988(Mouse); 289668(Rat)
SwissProt	P28838(Human); Q9CPY7(Mouse); Q68FS4(Rat)

\*AREX continuously optimizes our products. Webpage content may not reflect the latest updates. For inquiries, please contact [info@arexbio.com](mailto:info@arexbio.com) or your local distributor.

\*Clone Number, Reactivity, Source/Host and Clonality can be found in the product name and Key Features section above.

**DATASHEET****LAP3 Rabbit Polyclonal Antibody**

CAT. NO. APA13052

**DATA**

Western blot analysis of LAP3 expression in SW620 (A), HL60 (B), mouse liver (C), mouse heart (D) whole cell lysates. (Predicted band size: 52; 56 kD; Observed band size: 56 kD)

**STORAGE**

Store at 4°C short term. For long term storage, store at -20°C, avoiding freeze/thaw cycles.

**NOTE**

For Research Use Only. Not for diagnostic, therapeutics, prophylactic or in vivo use.