

DATASHEET

NAT5 Rabbit Polyclonal Antibody

CAT. NO. APA13054

KEY FEATURES

Target	NAT5	Source / Host	Rabbit
Reactivity	Human, Mouse, Rat	Clonality	Polyclonal
Applications	WB, IHC, IP	Conjugation	Unconjugated
Form / Buffer	Liquid in 0.42% Potassium phosphate, 0.87% Sodium chloride, pH 7.3, 30% glycerol, and 0.01% sodium azide.		Storage at-20°C

BACKGROUND

Catalytic subunit of the NatB complex which catalyzes acetylation of the N-terminal methionine residues of peptides beginning with Met-Asp, Met-Glu, Met-Asn and Met-Gln. Proteins with cell cycle functions are overrepresented in the pool of NatB substrates. Required for maintaining the structure and function of actomyosin fibers and for proper cellular migration.

APPLICATION

To ensure optimal assay performance, AREX recommends conducting reagent titration tailored to each testing system for optimal detection results.

WB	1:500 - 1:1000
IHC	1:50 - 1:200
IP	1:10 - 1:50

*Results are sample-specific. Please refer to your local assay conditions and test parameters for reference.

PRODUCT OVERVIEW

Description	Rabbit polyclonal antibody to NAT5
Specificity	Recognizes endogenous levels of NAT5 protein.
Antibody Type	Primary antibody
Immunogen	Recombinant fusion protein of human NAT5
Purification	The antibody was purified by immunogen affinity chromatography.
Molecular Weight	Predicted: 12; Observed: 20 kD
Form/Buffer	Liquid in 0.42% Potassium phosphate, 0.87% Sodium chloride, pH 7.3, 30% glycerol, and 0.01% sodium azide.
Alternative Names	NAT5; N-alpha-acetyltransferase 20; Methionine N-acetyltransferase; N-acetyltransferase 5; N-terminal acetyltransferase B complex catalytic subunit NAA20; N-terminal acetyltransferase B complex catalytic subunit NAT5; NatB complex subunit NAT5; NatB catalytic subunit
Gene Symbol	NAA20
Entrez Gene	51126(Human); 67877(Mouse)
SwissProt	P61599(Human); P61600(Mouse)

*AREX continuously optimizes our products. Webpage content may not reflect the latest updates. For inquiries, please contact info@arexbio.com or your local distributor.

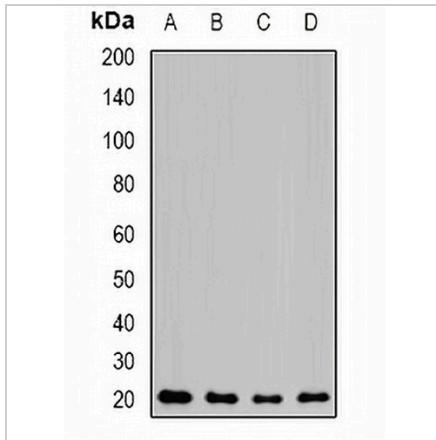
*Clone Number, Reactivity, Source/Host and Clonality can be found in the product name and Key Features section above.

DATASHEET

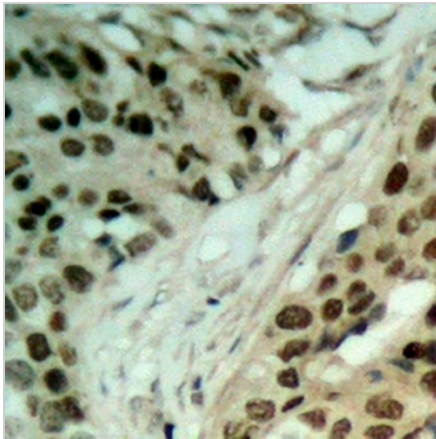
NAT5 Rabbit Polyclonal Antibody

CAT. NO. APA13054

DATA



Western blot analysis of NAT5 expression in MCF7 (A), mouse kidney (B), mouse heart (C), rat lung (D) whole cell lysates. (Predicted band size: 12; 20 kD; Observed band size: 20 kD)



Immunohistochemical analysis of NAT5 staining in human ovarian cancer formalin fixed paraffin embedded tissue section. The section was pre-treated using heat mediated antigen retrieval with sodium citrate buffer (pH 6.0). The section was then incubated with the antibody at room temperature and detected using an HRP conjugated compact polymer system. DAB was used as the chromogen. The section was then counterstained with haematoxylin and mounted with DPX.

STORAGE

Store at 4°C short term. For long term storage, store at -20°C, avoiding freeze/thaw cycles.

NOTE

For Research Use Only. Not for diagnostic, therapeutics, prophylactic or in vivo use.