

DATASHEET

DPP8 Rabbit Polyclonal Antibody

CAT. NO. APA13055

KEY FEATURES

| | | | |
|---------------|---|---------------|---------------------|
| Target | DPP8 | Source / Host | Rabbit |
| Reactivity | Human, Mouse, Rat | Clonality | Polyclonal |
| Applications | WB, IF/ICC | Conjugation | Unconjugated |
| Form / Buffer | Liquid in 0.42% Potassium phosphate, 0.87% Sodium chloride, pH 7.3, 30% glycerol, and 0.01% sodium azide. | | Storage at -20°C |

BACKGROUND

Dipeptidyl peptidase that cleaves off N-terminal dipeptides from proteins having a Pro or Ala residue at position 2 . Acts as a key inhibitor of caspase-1-dependent monocyte and macrophage pyroptosis in resting cells by preventing activation of NLRP1 and CARD8 . Sequesters the cleaved C-terminal part of NLRP1 and CARD8, which respectively constitute the active part of the NLRP1 and CARD8 inflammasomes, in a ternary complex, thereby preventing their oligomerization and activation . The dipeptidyl peptidase activity is required to suppress NLRP1 and CARD8; however, neither NLRP1 nor CARD8 are bona fide substrates of DPP8, suggesting the existence of substrate(s) required for NLRP1 and CARD8 inhibition .

APPLICATION

To ensure optimal assay performance, AREX recommends conducting reagent titration tailored to each testing system for optimal detection results.

| | |
|--------|----------------|
| WB | 1:500 - 1:2000 |
| IF/ICC | 1:50 - 1:100 |

*Results are sample-specific. Please refer to your local assay conditions and test parameters for reference.

PRODUCT OVERVIEW

| | |
|-------------------|---|
| Description | Rabbit polyclonal antibody to DPP8 |
| Specificity | Recognizes endogenous levels of DPP8 protein. |
| Antibody Type | Primary antibody |
| Immunogen | Recombinant fusion protein of human DPP8 |
| Purification | The antibody was purified by immunogen affinity chromatography. |
| Molecular Weight | Predicted: 83; Observed: 103 kD |
| Form/Buffer | Liquid in 0.42% Potassium phosphate, 0.87% Sodium chloride, pH 7.3, 30% glycerol, and 0.01% sodium azide. |
| Alternative Names | DPRP1; Dipeptidyl peptidase 8; DP8; Dipeptidyl peptidase IV-related protein 1; DPRP-1; Dipeptidyl peptidase VIII; DPP VIII; Prolyl dipeptidase DPP8 |
| Gene Symbol | DPP8 |
| Entrez Gene | 54878(Human); 74388(Mouse) |
| SwissProt | Q6V1X1(Human); Q80YA7(Mouse) |

*AREX continuously optimizes our products. Webpage content may not reflect the latest updates. For inquiries, please contact info@arexbio.com or your local distributor.

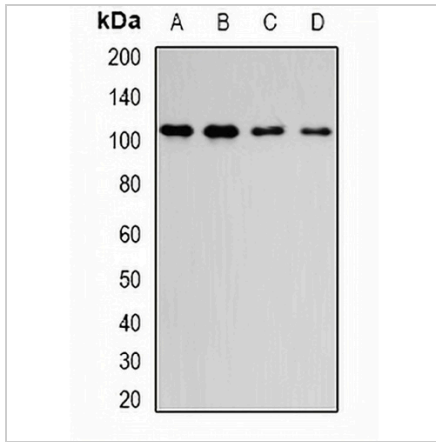
*Clone Number, Reactivity, Source/Host and Clonality can be found in the product name and Key Features section above.

DATASHEET

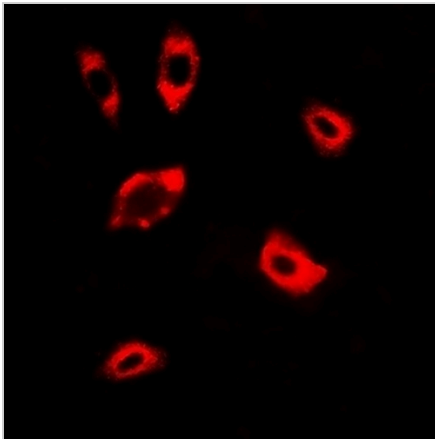
DPP8 Rabbit Polyclonal Antibody

CAT. NO. APA13055

DATA



Western blot analysis of DPP8 expression in MCF7 (A), HeLa (B), mouse brain (C), rat lung (D) whole cell lysates. (Predicted band size: 83; 89; 97; 101; 103 kD; Observed band size: 103 kD)



Immunofluorescent analysis of DPP8 staining in A549 cells. Formalin-fixed cells were permeabilized with 0.1% Triton X-100 in TBS for 5-10 minutes and blocked with 3% BSA-PBS for 30 minutes at room temperature. Cells were probed with the primary antibody in 3% BSA-PBS and incubated overnight at 4 °C in a humidified chamber. Cells were washed with PBST and incubated with a DyLight 594-conjugated secondary antibody (red) in PBS at room temperature in the dark.

STORAGE

Store at 4°C short term. For long term storage, store at -20°C, avoiding freeze/thaw cycles.

NOTE

For Research Use Only. Not for diagnostic, therapeutics, prophylactic or in vivo use.