

DATASHEET

PTGES2 Rabbit Polyclonal Antibody

CAT. NO. APA13056

KEY FEATURES

Target	PTGES2	Source / Host	Rabbit
Reactivity	Human, Mouse	Clonality	Polyclonal
Applications	WB, IHC, IF/ICC	Conjugation	Unconjugated
Form / Buffer	Liquid in 0.42% Potassium phosphate, 0.87% Sodium chloride, pH 7.3, 30% glycerol, and 0.01% sodium azide.		Storage at-20°C

BACKGROUND

Isomerase that catalyzes the conversion of PGH₂ into the more stable prostaglandin E₂ (PGE₂) (in vitro) (in vitro) . The biological function and the GSH-dependent property of PTGES2 is still under debate . In vivo, PTGES2 could form a complex with GSH and heme and would not participate in PGE₂ synthesis but would catalyze the degradation of prostaglandin E₂ H₂ (PGH₂) to 12(S)-hydroxy-5(Z),8(E),10(E)-heptadecatrienoic acid (HHT) and malondialdehyde (MDA) .

APPLICATION

To ensure optimal assay performance, AREX recommends conducting reagent titration tailored to each testing system for optimal detection results.

WB	1:500 - 1:2000
IHC	1:50 - 1:200
IF/ICC	1:50 - 1:100

*Results are sample-specific. Please refer to your local assay conditions and test parameters for reference.

PRODUCT OVERVIEW

Description	Rabbit polyclonal antibody to PTGES2
Specificity	Recognizes endogenous levels of PTGES2 protein.
Antibody Type	Primary antibody
Immunogen	Recombinant fusion protein of human PTGES2
Purification	The antibody was purified by immunogen affinity chromatography.
Molecular Weight	Predicted: 41 kD; Observed: 35 kD
Form/Buffer	Liquid in 0.42% Potassium phosphate, 0.87% Sodium chloride, pH 7.3, 30% glycerol, and 0.01% sodium azide.
Alternative Names	C9orf15; PGES2; Prostaglandin E synthase 2; Microsomal prostaglandin E synthase 2; mPGES-2
Gene Symbol	PTGES2
Entrez Gene	80142(Human); 96979(Mouse)
SwissProt	Q9H7Z7(Human); Q8BWM0(Mouse)

*AREX continuously optimizes our products. Webpage content may not reflect the latest updates. For inquiries, please contact info@arexbio.com or your local distributor.

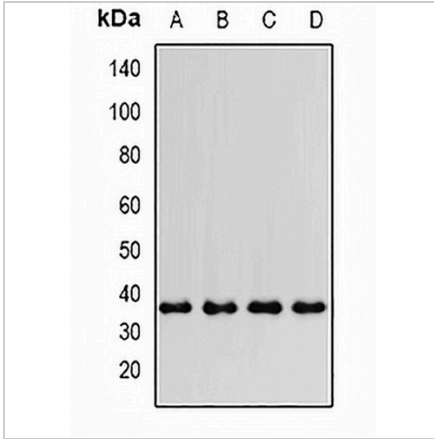
*Clone Number, Reactivity, Source/Host and Clonality can be found in the product name and Key Features section above.

DATASHEET

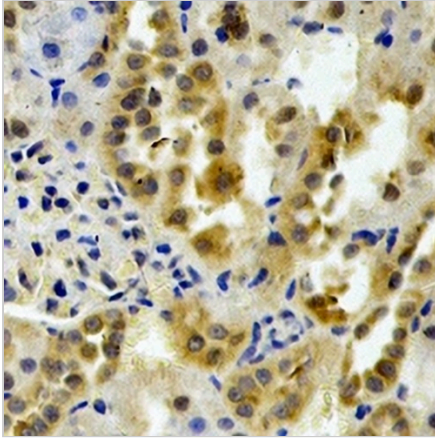
PTGES2 Rabbit Polyclonal Antibody

CAT. NO. APA13056

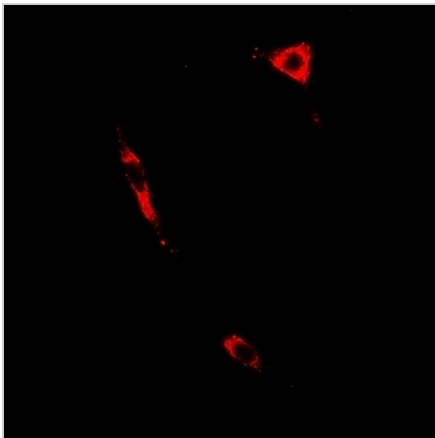
DATA



Western blot analysis of PTGES2 expression in HeLa (A), HL60 (B), mouse kidney (C), mouse heart (D) whole cell lysates. (Predicted band size: 41 kD; Observed band size: 35 kD)



Immunohistochemical analysis of PTGES2 staining in rat kidney formalin fixed paraffin embedded tissue section. The section was pre-treated using heat mediated antigen retrieval with sodium citrate buffer (pH 6.0). The section was then incubated with the antibody at room temperature and detected using an HRP conjugated compact polymer system. DAB was used as the chromogen. The section was then counterstained with haematoxylin and mounted with DPX.



Immunofluorescent analysis of PTGES2 staining in A549 cells. Formalin-fixed cells were permeabilized with 0.1% Triton X-100 in TBS for 5-10 minutes and blocked with 3% BSA-PBS for 30 minutes at room temperature. Cells were probed with the primary antibody in 3% BSA-PBS and incubated overnight at 4 °C in a humidified chamber. Cells were washed with PBST and incubated with a DyLight 594-conjugated secondary antibody (red) in PBS at room temperature in the dark.

STORAGE

Store at 4°C short term. For long term storage, store at -20°C, avoiding freeze/thaw cycles.

NOTE

For Research Use Only. Not for diagnostic, therapeutics, prophylactic or in vivo use.