

## DATASHEET

# FIP1L1 Rabbit Polyclonal Antibody

CAT. NO. APA13057

### KEY FEATURES

Target	FIP1L1	Source / Host	Rabbit
Reactivity	Human, Mouse, Rat	Clonality	Polyclonal
Applications	WB, IHC, IF/ICC	Conjugation	Unconjugated
Form / Buffer	Liquid in 0.42% Potassium phosphate, 0.87% Sodium chloride, pH 7.3, 30% glycerol, and 0.01% sodium azide.		Storage at-20°C

### BACKGROUND

Component of the cleavage and polyadenylation specificity factor (CPSF) complex that plays a key role in pre-mRNA 3'-end formation, recognizing the AAUAAA signal sequence and interacting with poly(A) polymerase and other factors to bring about cleavage and poly(A) addition. FIP1L1 contributes to poly(A) site recognition and stimulates poly(A) addition. Binds to U-rich RNA sequence elements surrounding the poly(A) site. May act to tether poly(A) polymerase to the CPSF complex.

### APPLICATION

To ensure optimal assay performance, AREX recommends conducting reagent titration tailored to each testing system for optimal detection results.

WB	1:500 - 1:2000
IHC	1:50 - 1:200
IF/ICC	1:50 - 1:100

\*Results are sample-specific. Please refer to your local assay conditions and test parameters for reference.

### PRODUCT OVERVIEW

Description	Rabbit polyclonal antibody to FIP1L1
Specificity	Recognizes endogenous levels of FIP1L1 protein.
Antibody Type	Primary antibody
Immunogen	Recombinant fusion protein of human FIP1L1
Purification	The antibody was purified by immunogen affinity chromatography.
Molecular Weight	Predicted: 40; Observed: 80 kD
Form/Buffer	Liquid in 0.42% Potassium phosphate, 0.87% Sodium chloride, pH 7.3, 30% glycerol, and 0.01% sodium azide.
Alternative Names	FIP1; RHE; Pre-mRNA 3'-end-processing factor FIP1; hFip1; FIP1-like 1 protein; Factor interacting with PAP; Rearranged in hypereosinophilia
Gene Symbol	FIP1L1
Entrez Gene	81608(Human); 66899(Mouse); 289582(Rat)
SwissProt	Q6UN15(Human); Q9D824(Mouse); Q5U317(Rat)

\*AREX continuously optimizes our products. Webpage content may not reflect the latest updates. For inquiries, please contact [info@arexbio.com](mailto:info@arexbio.com) or your local distributor.

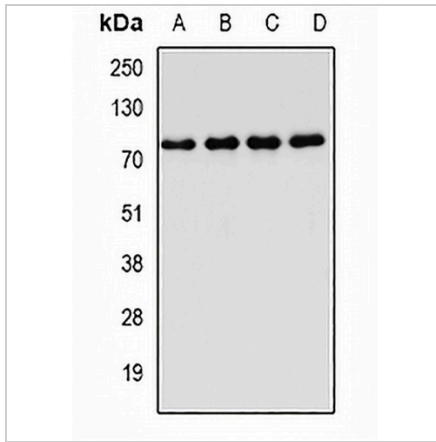
\*Clone Number, Reactivity, Source/Host and Clonality can be found in the product name and Key Features section above.

**DATASHEET**

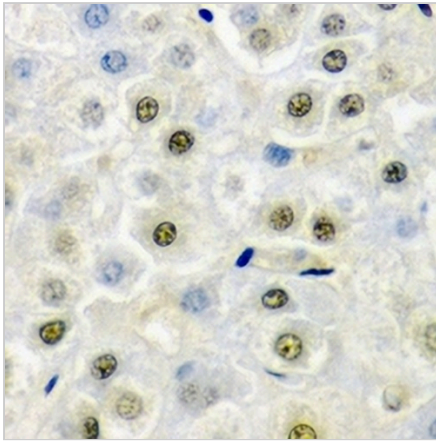
**FIP1L1 Rabbit Polyclonal Antibody**

CAT. NO. APA13057

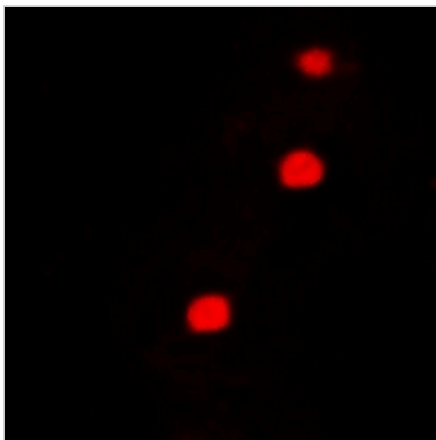
**DATA**



Western blot analysis of FIP1L1 expression in Jurkat (A), MCF7 (B), mouse thymus (C), rat lung (D) whole cell lysates. (Predicted band size: 40; 58; 65; 66 kD; Observed band size: 80 kD)



Immunohistochemical analysis of FIP1L1 staining in mouse liver formalin fixed paraffin embedded tissue section. The section was pre-treated using heat mediated antigen retrieval with sodium citrate buffer (pH 6.0). The section was then incubated with the antibody at room temperature and detected using an HRP conjugated compact polymer system. DAB was used as the chromogen. The section was then counterstained with haematoxylin and mounted with DPX.



Immunofluorescent analysis of FIP1L1 staining in A549 cells. Formalin-fixed cells were permeabilized with 0.1% Triton X-100 in TBS for 5-10 minutes and blocked with 3% BSA-PBS for 30 minutes at room temperature. Cells were probed with the primary antibody in 3% BSA-PBS and incubated overnight at 4 °C in a humidified chamber. Cells were washed with PBST and incubated with a DyLight 594-conjugated secondary antibody (red) in PBS at room temperature in the dark.

**STORAGE**

Store at 4°C short term. For long term storage, store at -20°C, avoiding freeze/thaw cycles.

**NOTE**

For Research Use Only. Not for diagnostic, therapeutics, prophylactic or in vivo use.