

**DATASHEET**

**Elmo3 Rabbit Polyclonal Antibody**

CAT. NO. APA13058

**KEY FEATURES**

Target	Elmo3	Source / Host	Rabbit
Reactivity	Human, Mouse, Rat	Clonality	Polyclonal
Applications	WB	Conjugation	Unconjugated
Form / Buffer	Liquid in 0.42% Potassium phosphate, 0.87% Sodium chloride, pH 7.3, 30% glycerol, and 0.01% sodium azide.		Storage at-20°C

**BACKGROUND**

Involved in cytoskeletal rearrangements required for phagocytosis of apoptotic cells and cell motility. Acts in association with DOCK1 and CRK. Was initially proposed to be required in complex with DOCK1 to activate Rac Rho small GTPases. May enhance the guanine nucleotide exchange factor (GEF) activity of DOCK1 .

**APPLICATION**

To ensure optimal assay performance, AREX recommends conducting reagent titration tailored to each testing system for optimal detection results.

WB	1:500 - 1:1000
----	----------------

\*Results are sample-specific. Please refer to your local assay conditions and test parameters for reference.

**PRODUCT OVERVIEW**

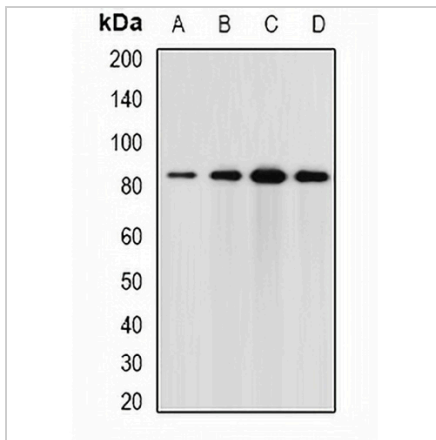
Description	Rabbit polyclonal antibody to Elmo3
Specificity	Recognizes endogenous levels of Elmo3 protein.
Antibody Type	Primary antibody
Immunogen	Recombinant fusion protein of human Elmo3
Purification	The antibody was purified by immunogen affinity chromatography.
Molecular Weight	Predicted: 68; Observed: 81 kD
Form/Buffer	Liquid in 0.42% Potassium phosphate, 0.87% Sodium chloride, pH 7.3, 30% glycerol, and 0.01% sodium azide.
Alternative Names	Engulfment and cell motility protein 3
Gene Symbol	ELMO3
Entrez Gene	79767(Human); 234683(Mouse); 291962(Rat)
SwissProt	Q96BJ8(Human); Q8BYZ7(Mouse); Q499U2(Rat)

\*AREX continuously optimizes our products. Webpage content may not reflect the latest updates. For inquiries, please contact [info@arexbio.com](mailto:info@arexbio.com) or your local distributor.

\*Clone Number, Reactivity, Source/Host and Clonality can be found in the product name and Key Features section above.

**DATASHEET****Elmo3 Rabbit Polyclonal Antibody**

CAT. NO. APA13058

**DATA**

Western blot analysis of Elmo3 expression in HT29 (A), mouse brain (B), mouse kidney (C), rat lung (D) whole cell lysates. (Predicted band size: 68; 81; 87 kD; Observed band size: 81 kD)

**STORAGE**

Store at 4°C short term. For long term storage, store at -20°C, avoiding freeze/thaw cycles.

**NOTE**

For Research Use Only. Not for diagnostic, therapeutics, prophylactic or in vivo use.