

DATASHEET

Hippi Rabbit Polyclonal Antibody

CAT. NO. APA13060

KEY FEATURES

Target	Hippi	Source / Host	Rabbit
Reactivity	Human, Mouse, Rat	Clonality	Polyclonal
Applications	WB	Conjugation	Unconjugated
Form / Buffer	Liquid in 0.42% Potassium phosphate, 0.87% Sodium chloride, pH 7.3, 30% glycerol, and 0.01% sodium azide.		Storage at-20°C

BACKGROUND

Required for the formation of cilia. Plays an indirect role in sonic hedgehog signaling, cilia being required for all activity of the hedgehog pathway. Together with RAB23 and KIF17, it is required for the localization of specific G protein-coupled receptors, such as dopamine receptor DRD1, to primary cilia. Has pro-apoptotic function via its interaction with HIP1, leading to recruit caspase-8 (CASP8) and trigger apoptosis. Has the ability to bind DNA sequence motif 5'-AAAGACATG-3' present in the promoter of caspase genes such as CASP1, CASP8 and CASP10, suggesting that it may act as a transcription regulator; however the relevance of such function remains unclear.

APPLICATION

To ensure optimal assay performance, AREX recommends conducting reagent titration tailored to each testing system for optimal detection results.

WB	1:500 - 1:2000
----	----------------

*Results are sample-specific. Please refer to your local assay conditions and test parameters for reference.

PRODUCT OVERVIEW

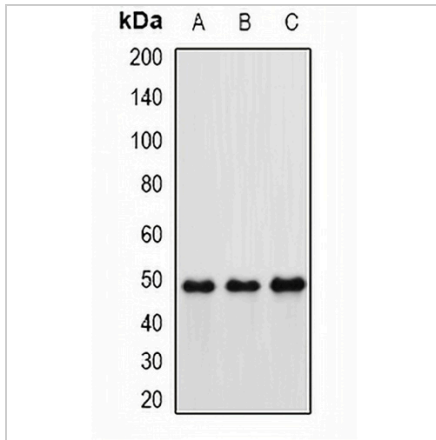
Description	Rabbit polyclonal antibody to Hippi
Specificity	Recognizes endogenous levels of Hippi protein.
Antibody Type	Primary antibody
Immunogen	Recombinant fusion protein of human Hippi
Purification	The antibody was purified by immunogen affinity chromatography.
Molecular Weight	Predicted: 49 kD; Observed: 49 kD
Form/Buffer	Liquid in 0.42% Potassium phosphate, 0.87% Sodium chloride, pH 7.3, 30% glycerol, and 0.01% sodium azide.
Alternative Names	DERP8; ESRRBL1; HIPPI; Intraflagellar transport protein 57 homolog; Dermal papilla-derived protein 8; Estrogen-related receptor beta-like protein 1; HIP1-interacting protein; MHS4R2
Gene Symbol	IFT57
Entrez Gene	55081(Human)
SwissProt	Q9NWB7(Human)

*AREX continuously optimizes our products. Webpage content may not reflect the latest updates. For inquiries, please contact info@arexbio.com or your local distributor.

*Clone Number, Reactivity, Source/Host and Clonality can be found in the product name and Key Features section above.

DATASHEET**Hippi Rabbit Polyclonal Antibody**

CAT. NO. APA13060

DATA

Western blot analysis of Hippi expression in MCF7 (A), mouse kidney (B), rat lung (C) whole cell lysates. (Predicted band size: 49 kD; Observed band size: 49 kD)

STORAGE

Store at 4°C short term. For long term storage, store at -20°C, avoiding freeze/thaw cycles.

NOTE

For Research Use Only. Not for diagnostic, therapeutics, prophylactic or in vivo use.