

**DATASHEET**

**MCM10 Rabbit Polyclonal Antibody**

CAT. NO. APA13062

**KEY FEATURES**

Target	MCM10	Source / Host	Rabbit
Reactivity	Human, Mouse	Clonality	Polyclonal
Applications	WB	Conjugation	Unconjugated
Form / Buffer	Liquid in 0.42% Potassium phosphate, 0.87% Sodium chloride, pH 7.3, 30% glycerol, and 0.01% sodium azide.		Storage at -20°C

**BACKGROUND**

Acts as a replication initiation factor that brings together the MCM2-7 helicase and the DNA polymerase alpha/primase complex in order to initiate DNA replication. Additionally, plays a role in preventing DNA damage during replication. Key effector of the RBBP6 and ZBTB38-mediated regulation of DNA-replication and common fragile sites stability; acts as a direct target of transcriptional repression by ZBTB38 .

**APPLICATION**

To ensure optimal assay performance, AREX recommends conducting reagent titration tailored to each testing system for optimal detection results.

WB	1:500 - 1:1000
----	----------------

\*Results are sample-specific. Please refer to your local assay conditions and test parameters for reference.

**PRODUCT OVERVIEW**

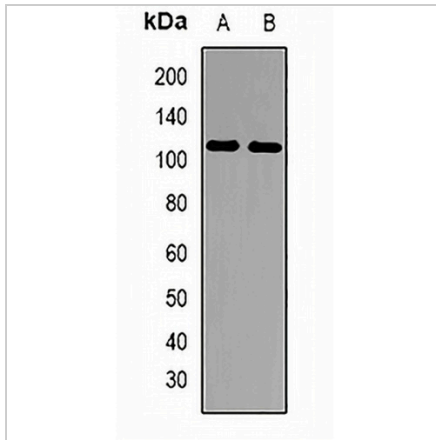
Description	Rabbit polyclonal antibody to MCM10
Specificity	Recognizes endogenous levels of MCM10 protein.
Antibody Type	Primary antibody
Immunogen	Recombinant fusion protein of human MCM10
Purification	The antibody was purified by immunogen affinity chromatography.
Molecular Weight	Predicted: 98 kD; Observed: 110 kD
Form/Buffer	Liquid in 0.42% Potassium phosphate, 0.87% Sodium chloride, pH 7.3, 30% glycerol, and 0.01% sodium azide.
Alternative Names	Protein MCM10 homolog; HsMCM10
Gene Symbol	MCM10
Entrez Gene	55388(Human)
SwissProt	Q7L590(Human)

\*AREX continuously optimizes our products. Webpage content may not reflect the latest updates. For inquiries, please contact [info@arexbio.com](mailto:info@arexbio.com) or your local distributor.

\*Clone Number, Reactivity, Source/Host and Clonality can be found in the product name and Key Features section above.

**DATASHEET****MCM10 Rabbit Polyclonal Antibody**

CAT. NO. APA13062

**DATA**

Western blot analysis of MCM10 expression in MCF7 (A), mouse liver (B) whole cell lysates. (Predicted band size: 98 kD; Observed band size: 110 kD)

**STORAGE**

Store at 4°C short term. For long term storage, store at -20°C, avoiding freeze/thaw cycles.

**NOTE**

For Research Use Only. Not for diagnostic, therapeutics, prophylactic or in vivo use.