

DATASHEET

PHYHD1 Rabbit Polyclonal Antibody

CAT. NO. APA13065

KEY FEATURES

Target	PHYHD1	Source / Host	Rabbit
Reactivity	Human, Mouse, Rat	Clonality	Polyclonal
Applications	WB, IF/ICC	Conjugation	Unconjugated
Form / Buffer	Liquid in 0.42% Potassium phosphate, 0.87% Sodium chloride, pH 7.3, 30% glycerol, and 0.01% sodium azide.		Storage at -20°C

BACKGROUND

2-oxoglutarate(2OG)-dependent dioxygenase that catalyzes the conversion of 2-oxoglutarate to succinate and CO(2) in an iron-dependent manner. However, does not couple 2OG turnover to the hydroxylation of acyl-coenzyme A derivatives, implying that it is not directly involved in phytanoyl coenzyme-A metabolism. Does not show detectable activity towards fatty acid CoA thioesters.

APPLICATION

To ensure optimal assay performance, AREX recommends conducting reagent titration tailored to each testing system for optimal detection results.

WB	1:500 - 1:2000
IF/ICC	1:50 - 1:100

*Results are sample-specific. Please refer to your local assay conditions and test parameters for reference.

PRODUCT OVERVIEW

Description	Rabbit polyclonal antibody to PHYHD1
Specificity	Recognizes endogenous levels of PHYHD1 protein.
Antibody Type	Primary antibody
Immunogen	Recombinant fusion protein of human PHYHD1
Purification	The antibody was purified by immunogen affinity chromatography.
Molecular Weight	Predicted: 30; Observed: 32 kD
Form/Buffer	Liquid in 0.42% Potassium phosphate, 0.87% Sodium chloride, pH 7.3, 30% glycerol, and 0.01% sodium azide.
Alternative Names	Phytanoyl-CoA dioxygenase domain-containing protein 1
Gene Symbol	PHYHD1
Entrez Gene	254295(Human); 227696(Mouse); 296621(Rat)
SwissProt	Q5SRE7(Human); Q9DB26(Mouse); Q5BJP9(Rat)

*AREX continuously optimizes our products. Webpage content may not reflect the latest updates. For inquiries, please contact info@arexbio.com or your local distributor.

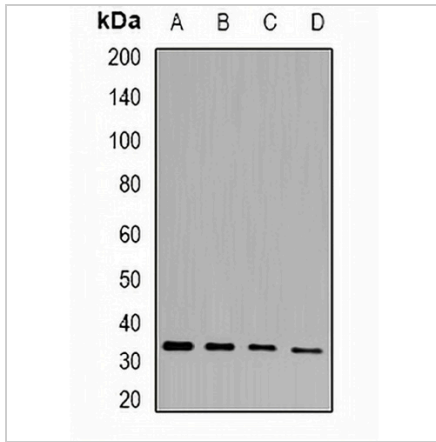
*Clone Number, Reactivity, Source/Host and Clonality can be found in the product name and Key Features section above.

DATASHEET

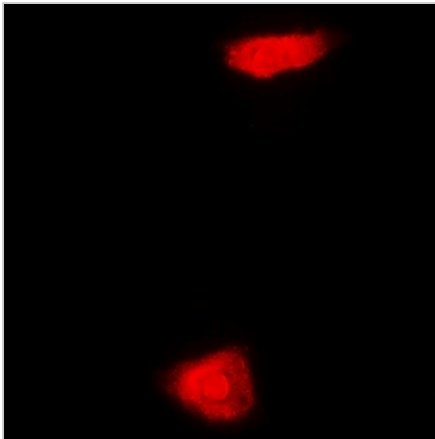
PHYHD1 Rabbit Polyclonal Antibody

CAT. NO. APA13065

DATA



Western blot analysis of PHYHD1 expression in mouse heart (A), mouse skin (B), rat liver (C), rat kidney (D) whole cell lysates. (Predicted band size: 30; 32 kD; Observed band size: 32 kD)



Immunofluorescent analysis of PHYHD1 staining in MCF7 cells. Formalin-fixed cells were permeabilized with 0.1% Triton X-100 in TBS for 5-10 minutes and blocked with 3% BSA-PBS for 30 minutes at room temperature. Cells were probed with the primary antibody in 3% BSA-PBS and incubated overnight at 4 °C in a humidified chamber. Cells were washed with PBST and incubated with a DyLight 594-conjugated secondary antibody (red) in PBS at room temperature in the dark.

STORAGE

Store at 4°C short term. For long term storage, store at -20°C, avoiding freeze/thaw cycles.

NOTE

For Research Use Only. Not for diagnostic, therapeutics, prophylactic or in vivo use.