

**DATASHEET**

**SMCHD1 Rabbit Polyclonal Antibody**

CAT. NO. APA13066

**KEY FEATURES**

Target	SMCHD1	Source / Host	Rabbit
Reactivity	Human, Mouse, Rat	Clonality	Polyclonal
Applications	WB, IF/ICC	Conjugation	Unconjugated
Form / Buffer	Liquid in 0.42% Potassium phosphate, 0.87% Sodium chloride, pH 7.3, 30% glycerol, and 0.01% sodium azide.		Storage at -20°C

**BACKGROUND**

Non-canonical member of the structural maintenance of chromosomes (SMC) protein family that plays a key role in epigenetic silencing by regulating chromatin architecture . Promotes heterochromatin formation in both autosomes and chromosome X, probably by mediating the merge of chromatin compartments . Plays a key role in chromosome X inactivation in females by promoting the spreading of heterochromatin protein family that plays a key role in epigenetic silencing by regulating chromatin architecture . Promotes heterochromatin formation in both autosomes and chromosome X, probably by mediating the merge of chromatin compartments . Plays a key role in chromosome X inactivation in females by promoting the spreading of heterochromatin .

**APPLICATION**

To ensure optimal assay performance, AREX recommends conducting reagent titration tailored to each testing system for optimal detection results.

WB	1:500 - 1:2000
IF/ICC	1:50 - 1:100

\*Results are sample-specific. Please refer to your local assay conditions and test parameters for reference.

**PRODUCT OVERVIEW**

Description	Rabbit polyclonal antibody to SMCHD1
Specificity	Recognizes endogenous levels of SMCHD1 protein.
Antibody Type	Primary antibody
Immunogen	Recombinant fusion protein of human SMCHD1
Purification	The antibody was purified by immunogen affinity chromatography.
Molecular Weight	Predicted: 85; Observed: 246 kD
Form/Buffer	Liquid in 0.42% Potassium phosphate, 0.87% Sodium chloride, pH 7.3, 30% glycerol, and 0.01% sodium azide.
Alternative Names	KIAA0650; Structural maintenance of chromosomes flexible hinge domain-containing protein 1; SMC hinge domain-containing protein 1
Gene Symbol	SMCHD1
Entrez Gene	23347(Human); 74355(Mouse)
SwissProt	A6NHR9(Human); Q6P5D8(Mouse)

\*AREX continuously optimizes our products. Webpage content may not reflect the latest updates. For inquiries, please contact [info@arexbio.com](mailto:info@arexbio.com) or your local distributor.

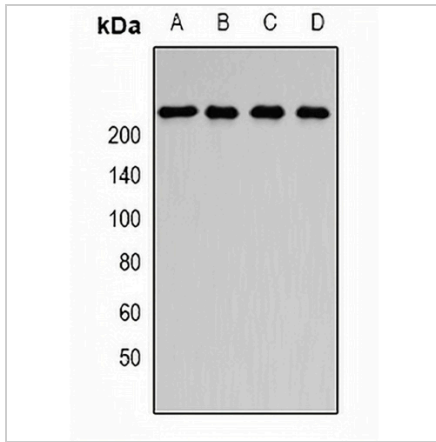
\*Clone Number, Reactivity, Source/Host and Clonality can be found in the product name and Key Features section above.

**DATASHEET**

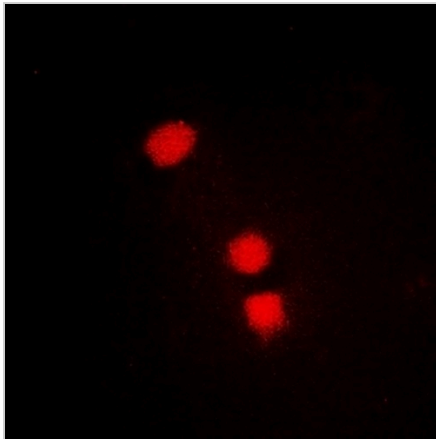
**SMCHD1 Rabbit Polyclonal Antibody**

CAT. NO. APA13066

**DATA**



Western blot analysis of SMCHD1 expression in SKOV3 (A), Jurkat (B), HepG2 (C), rat brain (D) whole cell lysates. (Predicted band size: 85; 215; 226 kD; Observed band size: 246 kD)



Immunofluorescent analysis of SMCHD1 staining in MCF7 cells. Formalin-fixed cells were permeabilized with 0.1% Triton X-100 in TBS for 5-10 minutes and blocked with 3% BSA-PBS for 30 minutes at room temperature. Cells were probed with the primary antibody in 3% BSA-PBS and incubated overnight at 4 °C in a humidified chamber. Cells were washed with PBST and incubated with a DyLight 594-conjugated secondary antibody (red) in PBS at room temperature in the dark.

**STORAGE**

Store at 4°C short term. For long term storage, store at -20°C, avoiding freeze/thaw cycles.

**NOTE**

For Research Use Only. Not for diagnostic, therapeutics, prophylactic or in vivo use.