

DATASHEET

SETD6 Rabbit Polyclonal Antibody

CAT. NO. APA13069

KEY FEATURES

Target	SETD6	Source / Host	Rabbit
Reactivity	Human, Mouse, Rat	Clonality	Polyclonal
Applications	WB	Conjugation	Unconjugated
Form / Buffer	Liquid in 0.42% Potassium phosphate, 0.87% Sodium chloride, pH 7.3, 30% glycerol, and 0.01% sodium azide.		Storage at-20°C

BACKGROUND

Protein-lysine N-methyltransferase. Monomethylates 'Lys-310' of the RELA subunit of NF-kappa-B complex, leading to down-regulation of NF-kappa-B transcription factor activity . Monomethylates 'Lys-8' of H2AZ (H2AZK8me1) . Required for the maintenance of embryonic stem cell self-renewal . Methylates PAK4.

APPLICATION

To ensure optimal assay performance, AREX recommends conducting reagent titration tailored to each testing system for optimal detection results.

WB	1:500 - 1:1000
----	----------------

*Results are sample-specific. Please refer to your local assay conditions and test parameters for reference.

PRODUCT OVERVIEW

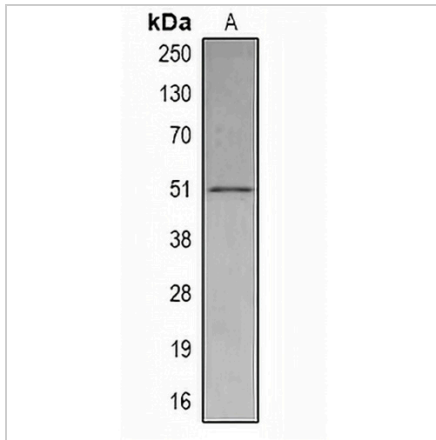
Description	Rabbit polyclonal antibody to SETD6
Specificity	Recognizes endogenous levels of SETD6 protein.
Antibody Type	Primary antibody
Immunogen	Recombinant fusion protein of human SETD6
Purification	The antibody was purified by immunogen affinity chromatography.
Molecular Weight	Predicted: 50; Observed: 53 kD
Form/Buffer	Liquid in 0.42% Potassium phosphate, 0.87% Sodium chloride, pH 7.3, 30% glycerol, and 0.01% sodium azide.
Alternative Names	N-lysine methyltransferase SETD6; SET domain-containing protein 6
Gene Symbol	SETD6
Entrez Gene	79918(Human); 66083(Mouse); 291844(Rat)
SwissProt	Q8TBK2(Human); Q9CWFY3(Mouse); D3ZSK5(Rat)

*AREX continuously optimizes our products. Webpage content may not reflect the latest updates. For inquiries, please contact info@arexbio.com or your local distributor.

*Clone Number, Reactivity, Source/Host and Clonality can be found in the product name and Key Features section above.

DATASHEET**SETD6 Rabbit Polyclonal Antibody**

CAT. NO. APA13069

DATA

Western blot analysis of SETD6 expression in THP1 (A) whole cell lysates. (Predicted band size: 50; 53 kD; Observed band size: 53 kD)

STORAGE

Store at 4°C short term. For long term storage, store at -20°C, avoiding freeze/thaw cycles.

NOTE

For Research Use Only. Not for diagnostic, therapeutics, prophylactic or in vivo use.