

DATASHEET

L3MBTL3 Rabbit Polyclonal Antibody

CAT. NO. APA13075

KEY FEATURES

Target	L3MBTL3	Source / Host	Rabbit
Reactivity	Human	Clonality	Polyclonal
Applications	WB, IF/ICC	Conjugation	Unconjugated
Form / Buffer	Liquid in 0.42% Potassium phosphate, 0.87% Sodium chloride, pH 7.3, 30% glycerol, and 0.01% sodium azide.		Storage at -20°C

BACKGROUND

Is a negative regulator of Notch target genes expression, required for RBPJ-mediated transcriptional repression . It recruits KDM1A to Notch-responsive elements and promotes KDM1A-mediated H3K4me demethylation . Involved in the regulation of ubiquitin-dependent degradation of a set of methylated non-histone proteins, including SOX2, DNMT1 and E2F1. It acts as an adapter recruiting the CRL4-DCAF5 E3 ubiquitin ligase complex to methylated target proteins . Required for normal maturation of myeloid progenitor cells .

APPLICATION

To ensure optimal assay performance, AREX recommends conducting reagent titration tailored to each testing system for optimal detection results.

WB	1:500 - 1:2000
IF/ICC	1:50 - 1:100

*Results are sample-specific. Please refer to your local assay conditions and test parameters for reference.

PRODUCT OVERVIEW

Description	Rabbit polyclonal antibody to L3MBTL3
Specificity	Recognizes endogenous levels of L3MBTL3 protein.
Antibody Type	Primary antibody
Immunogen	Recombinant fusion protein of human L3MBTL3
Purification	The antibody was purified by immunogen affinity chromatography.
Molecular Weight	Predicted: 88 kD; Observed: 88 kD
Form/Buffer	Liquid in 0.42% Potassium phosphate, 0.87% Sodium chloride, pH 7.3, 30% glycerol, and 0.01% sodium azide.
Alternative Names	KIAA1798; MBT1; Lethal(3)malignant brain tumor-like protein 3; H-l(3)mbt-like protein 3; L(3)mbt-like protein 3; MBT-1
Gene Symbol	L3MBTL3
Entrez Gene	84456(Human)
SwissProt	Q96JM7(Human)

*AREX continuously optimizes our products. Webpage content may not reflect the latest updates. For inquiries, please contact info@arexbio.com or your local distributor.

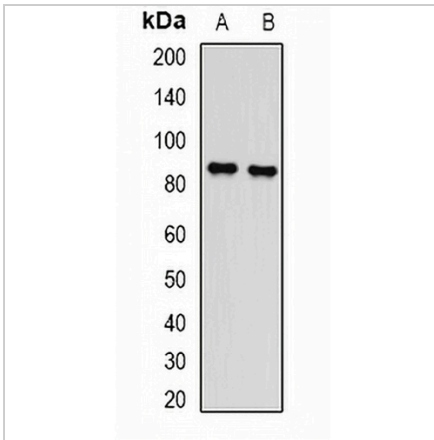
*Clone Number, Reactivity, Source/Host and Clonality can be found in the product name and Key Features section above.

DATASHEET

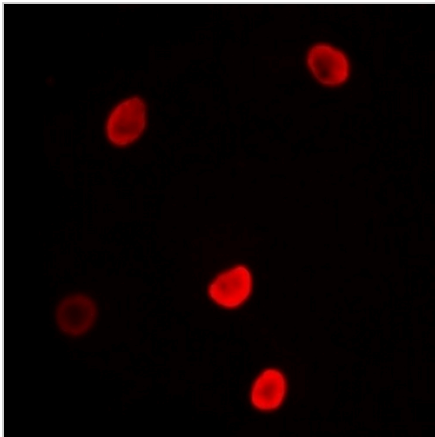
L3MBTL3 Rabbit Polyclonal Antibody

CAT. NO. APA13075

DATA



Western blot analysis of L3MBTL3 expression in HeLa (A), mouse spleen (B) whole cell lysates. (Predicted band size: 88 kD; Observed band size: 88 kD)



Immunofluorescent analysis of L3MBTL3 staining in MCF7 cells. Formalin-fixed cells were permeabilized with 0.1% Triton X-100 in TBS for 5-10 minutes and blocked with 3% BSA-PBS for 30 minutes at room temperature. Cells were probed with the primary antibody in 3% BSA-PBS and incubated overnight at 4 °C in a humidified chamber. Cells were washed with PBST and incubated with a DyLight 594-conjugated secondary antibody (red) in PBS at room temperature in the dark.

STORAGE

Store at 4°C short term. For long term storage, store at -20°C, avoiding freeze/thaw cycles.

NOTE

For Research Use Only. Not for diagnostic, therapeutics, prophylactic or in vivo use.