

**DATASHEET**

**Pr-Set7 Rabbit Polyclonal Antibody**

CAT. NO. APA13078

**KEY FEATURES**

Target	Pr-Set7	Source / Host	Rabbit
Reactivity	Human, Mouse, Rat	Clonality	Polyclonal
Applications	WB, IF/ICC	Conjugation	Unconjugated
Form / Buffer	Liquid in 0.42% Potassium phosphate, 0.87% Sodium chloride, pH 7.3, 30% glycerol, and 0.01% sodium azide.		Storage at -20°C

**BACKGROUND**

Protein-lysine N-methyltransferase that monomethylates both histones and non-histone proteins . Specifically monomethylates 'Lys-20' of histone H4 (H4K20me1) . H4K20me1 is enriched during mitosis and represents a specific tag for epigenetic transcriptional repression . Mainly functions in euchromatin regions, thereby playing a central role in the silencing of euchromatic genes . Required for cell proliferation, probably by contributing to the maintenance of proper higher-order structure of DNA during mitosis . Involved in chromosome condensation and proper cytokinesis . Nucleosomes are preferred as substrate compared to free histones . Mediates monomethylation of p53/TP53 at 'Lys-382', leading to repress p53/TP53-target genes .

**APPLICATION**

To ensure optimal assay performance, AREX recommends conducting reagent titration tailored to each testing system for optimal detection results.

WB	1:500 - 1:2000
IF/ICC	1:50 - 1:100

\*Results are sample-specific. Please refer to your local assay conditions and test parameters for reference.

**PRODUCT OVERVIEW**

Description	Rabbit polyclonal antibody to Pr-Set7
Specificity	Recognizes endogenous levels of Pr-Set7 protein.
Antibody Type	Primary antibody
Immunogen	Recombinant fusion protein of human Pr-Set7
Purification	The antibody was purified by immunogen affinity chromatography.
Molecular Weight	Predicted: 39; Observed: 43 kD
Form/Buffer	Liquid in 0.42% Potassium phosphate, 0.87% Sodium chloride, pH 7.3, 30% glycerol, and 0.01% sodium azide.
Alternative Names	KMT5A; PRSET7; SET07; SET8; N-lysine methyltransferase SETD8; H4-K20-HMTase SETD8; Histone-lysine N-methyltransferase SETD8; Lysine N-methyltransferase 5A; PR/SET domain-containing protein 07; PR-Set7; PR/SET07; SET domain-containing protein 8
Gene Symbol	SETD8
Entrez Gene	387893(Human)
SwissProt	Q9NQR1(Human)

\*AREX continuously optimizes our products. Webpage content may not reflect the latest updates. For inquiries, please contact [info@arexbio.com](mailto:info@arexbio.com) or your local distributor.

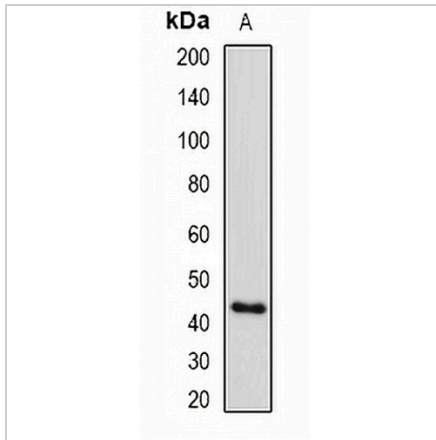
\*Clone Number, Reactivity, Source/Host and Clonality can be found in the product name and Key Features section above.

**DATASHEET**

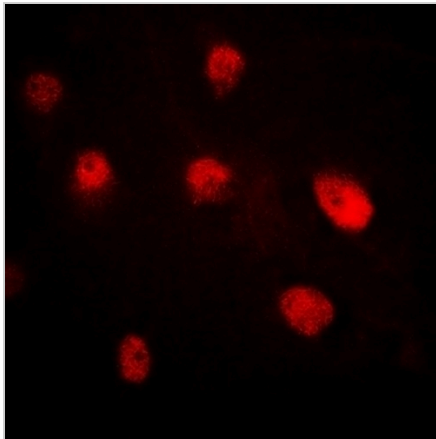
**Pr-Set7 Rabbit Polyclonal Antibody**

CAT. NO. APA13078

**DATA**



Western blot analysis of Pr-Set7 expression in HEK293T (A) whole cell lysates. (Predicted band size: 39; 42 kD; Observed band size: 43 kD)



Immunofluorescent analysis of Pr-Set7 staining in MCF7 cells. Formalin-fixed cells were permeabilized with 0.1% Triton X-100 in TBS for 5-10 minutes and blocked with 3% BSA-PBS for 30 minutes at room temperature. Cells were probed with the primary antibody in 3% BSA-PBS and incubated overnight at 4 °C in a humidified chamber. Cells were washed with PBST and incubated with a DyLight 594-conjugated secondary antibody (red) in PBS at room temperature in the dark.

**STORAGE**

Store at 4°C short term. For long term storage, store at -20°C, avoiding freeze/thaw cycles.

**NOTE**

For Research Use Only. Not for diagnostic, therapeutics, prophylactic or in vivo use.