

DATASHEET

WBSCR22 Rabbit Polyclonal Antibody

CAT. NO. APA13080

KEY FEATURES

Target	WBSCR22	Source / Host	Rabbit
Reactivity	Human, Mouse	Clonality	Polyclonal
Applications	WB, IF/ICC	Conjugation	Unconjugated
Form / Buffer	Liquid in 0.42% Potassium phosphate, 0.87% Sodium chloride, pH 7.3, 30% glycerol, and 0.01% sodium azide.		Storage at -20°C

BACKGROUND

S-adenosyl-L-methionine-dependent methyltransferase that specifically methylates the N(7) position of a guanine in 18S rRNA position of a guanine in 18S rRNA . Requires the methyltransferase adapter protein TRM112 for full rRNA methyltransferase activity . Involved in the pre-rRNA processing steps leading to small-subunit rRNA production independently of its RNA-modifying catalytic activity . Important for biogenesis and export of the 40S ribosomal subunit independent on its methyltransferase activity . Locus-specific steroid receptor coactivator. Potentiates transactivation by glucocorticoid (NR3C1), mineralocorticoid (NR3C2), androgen (AR) and progesterone (PGR) receptors .

APPLICATION

To ensure optimal assay performance, AREX recommends conducting reagent titration tailored to each testing system for optimal detection results.

WB	1:500 - 1:1000
IF/ICC	1:50 - 1:200

*Results are sample-specific. Please refer to your local assay conditions and test parameters for reference.

PRODUCT OVERVIEW

Description	Rabbit polyclonal antibody to WBSCR22
Specificity	Recognizes endogenous levels of WBSCR22 protein.
Antibody Type	Primary antibody
Immunogen	Recombinant fusion protein of human WBSCR22
Purification	The antibody was purified by immunogen affinity chromatography.
Molecular Weight	Predicted: 24; Observed: 33 kD
Form/Buffer	Liquid in 0.42% Potassium phosphate, 0.87% Sodium chloride, pH 7.3, 30% glycerol, and 0.01% sodium azide.
Alternative Names	Ribosome biogenesis methyltransferase WBSCR22; Williams-Beuren syndrome chromosomal region 22 protein
Gene Symbol	WBSCR22
Entrez Gene	114049(Human)
SwissProt	O43709(Human)

*AREX continuously optimizes our products. Webpage content may not reflect the latest updates. For inquiries, please contact info@arexbio.com or your local distributor.

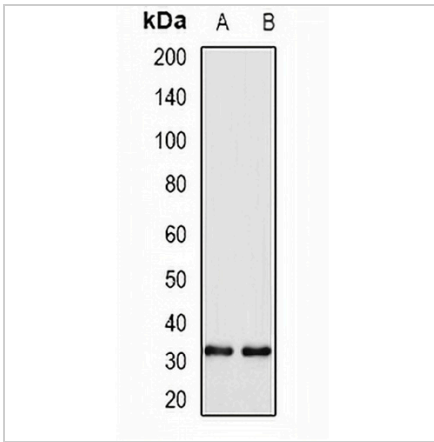
*Clone Number, Reactivity, Source/Host and Clonality can be found in the product name and Key Features section above.

DATASHEET

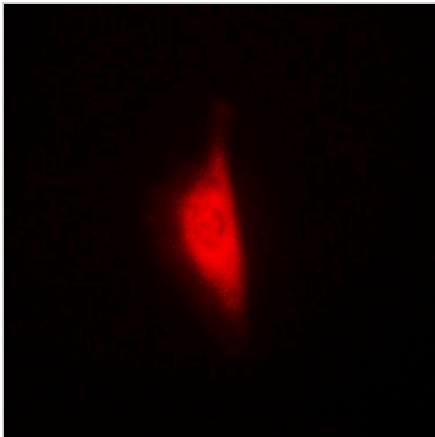
WBSCR22 Rabbit Polyclonal Antibody

CAT. NO. APA13080

DATA



Western blot analysis of WBSCR22 expression in H460 (A), A549 (B) whole cell lysates. (Predicted band size: 24; 31; 33 kD; Observed band size: 33 kD)



Immunofluorescent analysis of WBSCR22 staining in MCF7 cells. Formalin-fixed cells were permeabilized with 0.1% Triton X-100 in TBS for 5-10 minutes and blocked with 3% BSA-PBS for 30 minutes at room temperature. Cells were probed with the primary antibody in 3% BSA-PBS and incubated overnight at 4 °C in a humidified chamber. Cells were washed with PBST and incubated with a DyLight 594-conjugated secondary antibody (red) in PBS at room temperature in the dark.

STORAGE

Store at 4°C short term. For long term storage, store at -20°C, avoiding freeze/thaw cycles.

NOTE

For Research Use Only. Not for diagnostic, therapeutics, prophylactic or in vivo use.