

DATASHEET

LHX6 Rabbit Polyclonal Antibody

CAT. NO. APA13091

KEY FEATURES

Target	LHX6	Source / Host	Rabbit
Reactivity	Human, Mouse, Rat	Clonality	Polyclonal
Applications	WB	Conjugation	Unconjugated
Form / Buffer	Liquid in 0.42% Potassium phosphate, 0.87% Sodium chloride, pH 7.3, 30% glycerol, and 0.01% sodium azide.		Storage at -20°C

BACKGROUND

Probable transcription factor required for the expression of a subset of genes involved in interneurons migration and development. Functions in the specification of cortical interneuron subtypes and in the migration of GABAergic interneuron precursors from the subpallium to the cerebral cortex .

APPLICATION

To ensure optimal assay performance, AREX recommends conducting reagent titration tailored to each testing system for optimal detection results.

WB	1:500 - 1:1000
----	----------------

*Results are sample-specific. Please refer to your local assay conditions and test parameters for reference.

PRODUCT OVERVIEW

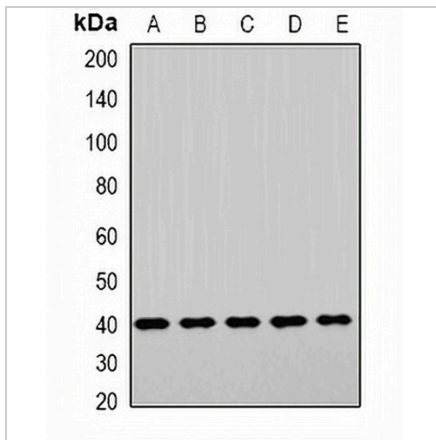
Description	Rabbit polyclonal antibody to LHX6
Specificity	Recognizes endogenous levels of LHX6 protein.
Antibody Type	Primary antibody
Immunogen	Recombinant fusion protein of human LHX6
Purification	The antibody was purified by immunogen affinity chromatography.
Molecular Weight	Predicted: 19; Observed: 43 kD
Form/Buffer	Liquid in 0.42% Potassium phosphate, 0.87% Sodium chloride, pH 7.3, 30% glycerol, and 0.01% sodium azide.
Alternative Names	LHX6.1; LIM/homeobox protein Lhx6; LIM homeobox protein 6; LIM/homeobox protein Lhx6.1
Gene Symbol	LHX6
Entrez Gene	26468(Human); 16874(Mouse)
SwissProt	Q9UPM6(Human); Q9R1R0(Mouse)

*AREX continuously optimizes our products. Webpage content may not reflect the latest updates. For inquiries, please contact info@arexbio.com or your local distributor.

*Clone Number, Reactivity, Source/Host and Clonality can be found in the product name and Key Features section above.

DATASHEET**LHX6 Rabbit Polyclonal Antibody**

CAT. NO. APA13091

DATA

Western blot analysis of LHX6 expression in HepG2 (A), NIH3T3 (B), mouse brain (C), mouse liver (D), rat heart (E) whole cell lysates. (Predicted band size: 19; 38; 40; 41; 43 kD; Observed band size: 43 kD)

STORAGE

Store at 4°C short term. For long term storage, store at -20°C, avoiding freeze/thaw cycles.

NOTE

For Research Use Only. Not for diagnostic, therapeutics, prophylactic or in vivo use.