

DATASHEET

NAT13 Rabbit Polyclonal Antibody

CAT. NO. APA13095

KEY FEATURES

Target	NAT13	Source / Host	Rabbit
Reactivity	Human, Mouse	Clonality	Polyclonal
Applications	WB, IHC, IF/ICC	Conjugation	Unconjugated
Form / Buffer	Liquid in 0.42% Potassium phosphate, 0.87% Sodium chloride, pH 7.3, 30% glycerol, and 0.01% sodium azide.		Storage at -20°C

BACKGROUND

N-alpha-acetyltransferase that acetylates the N-terminus of proteins that retain their initiating methionine . Has a broad substrate specificity: able to acetylate the initiator methionine of most peptides, except for those with a proline in second position . Also displays N-epsilon-acetyltransferase activity by mediating acetylation of the side chain of specific lysines on proteins . Autoacetylates in vivo . The relevance of N-epsilon-acetyltransferase activity is however unclear: able to acetylate H4 in vitro, but this result has not been confirmed in vivo . Component of N-alpha-acetyltransferase complexes containing NAA10 and NAA15, which has N-alpha-acetyltransferase activity . Does not influence the acetyltransferase activity of NAA10 .

APPLICATION

To ensure optimal assay performance, AREX recommends conducting reagent titration tailored to each testing system for optimal detection results.

WB	1:500 - 1:2000
IHC	1:50 - 1:200
IF/ICC	1:50 - 1:200

*Results are sample-specific. Please refer to your local assay conditions and test parameters for reference.

PRODUCT OVERVIEW

Description	Rabbit polyclonal antibody to NAT13
Specificity	Recognizes endogenous levels of NAT13 protein.
Antibody Type	Primary antibody
Immunogen	Recombinant fusion protein of human NAT13
Purification	The antibody was purified by immunogen affinity chromatography.
Molecular Weight	Predicted: 19 kD; Observed: 19 kD
Form/Buffer	Liquid in 0.42% Potassium phosphate, 0.87% Sodium chloride, pH 7.3, 30% glycerol, and 0.01% sodium azide.
Alternative Names	MAK3; NAT13; NAT5; N-alpha-acetyltransferase 50; N-acetyltransferase 13; N-acetyltransferase 5; hNAT5; N-acetyltransferase san homolog; hSAN; NatE catalytic subunit
Gene Symbol	NAA50
Entrez Gene	80218(Human); 72117(Mouse)
SwissProt	Q9GZZ1(Human); Q6PGB6(Mouse)

*AREX continuously optimizes our products. Webpage content may not reflect the latest updates. For inquiries, please contact info@arexbio.com or your local distributor.

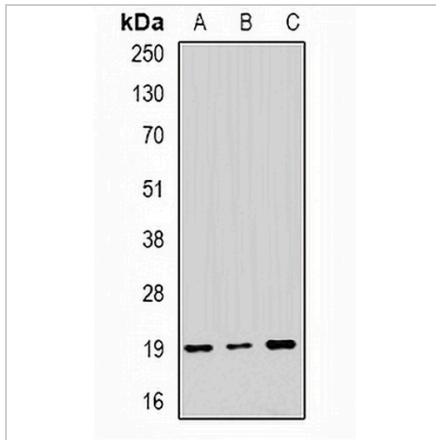
*Clone Number, Reactivity, Source/Host and Clonality can be found in the product name and Key Features section above.

DATASHEET

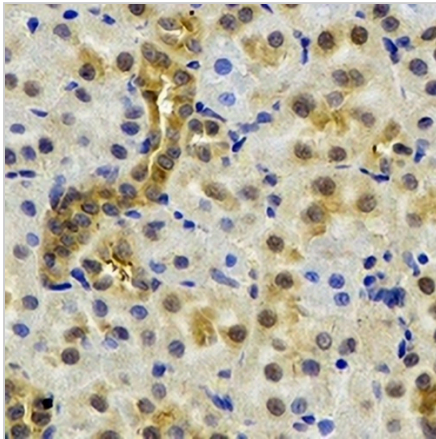
NAT13 Rabbit Polyclonal Antibody

CAT. NO. APA13095

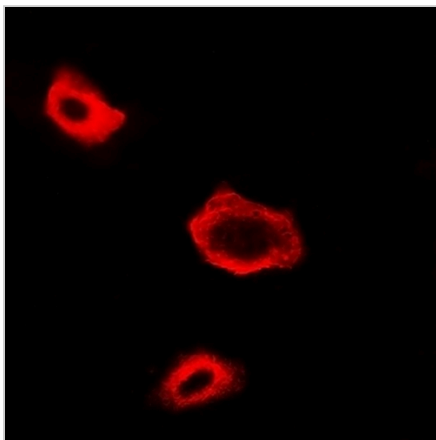
DATA



Western blot analysis of NAT13 expression in SKOV3 (A), MCF7 (B), mouse brain (C) whole cell lysates. (Predicted band size: 19 kD; Observed band size: 19 kD)



Immunohistochemical analysis of NAT13 staining in rat kidney formalin fixed paraffin embedded tissue section. The section was pre-treated using heat mediated antigen retrieval with sodium citrate buffer (pH 6.0). The section was then incubated with the antibody at room temperature and detected using an HRP conjugated compact polymer system. DAB was used as the chromogen. The section was then counterstained with haematoxylin and mounted with DPX.



Immunofluorescent analysis of NAT13 staining in A549 cells. Formalin-fixed cells were permeabilized with 0.1% Triton X-100 in TBS for 5-10 minutes and blocked with 3% BSA-PBS for 30 minutes at room temperature. Cells were probed with the primary antibody in 3% BSA-PBS and incubated overnight at 4 °C in a humidified chamber. Cells were washed with PBST and incubated with a DyLight 594-conjugated secondary antibody (red) in PBS at room temperature in the dark.

STORAGE

Store at 4°C short term. For long term storage, store at -20°C, avoiding freeze/thaw cycles.

NOTE

For Research Use Only. Not for diagnostic, therapeutics, prophylactic or in vivo use.