

DATASHEET

WISP2 Rabbit Polyclonal Antibody

CAT. NO. APA13106

KEY FEATURES

Target	WISP2	Source / Host	Rabbit
Reactivity	Human, Mouse, Rat	Clonality	Polyclonal
Applications	WB	Conjugation	Unconjugated
Form / Buffer	Liquid in 0.42% Potassium phosphate, 0.87% Sodium chloride, pH 7.3, 30% glycerol, and 0.01% sodium azide.		Storage at -20°C

BACKGROUND

May play an important role in modulating bone turnover. Promotes the adhesion of osteoblast cells and inhibits the binding of fibrinogen to integrin receptors. In addition, inhibits osteocalcin production.

APPLICATION

To ensure optimal assay performance, AREX recommends conducting reagent titration tailored to each testing system for optimal detection results.

WB	1:500 - 1:1000
----	----------------

*Results are sample-specific. Please refer to your local assay conditions and test parameters for reference.

PRODUCT OVERVIEW

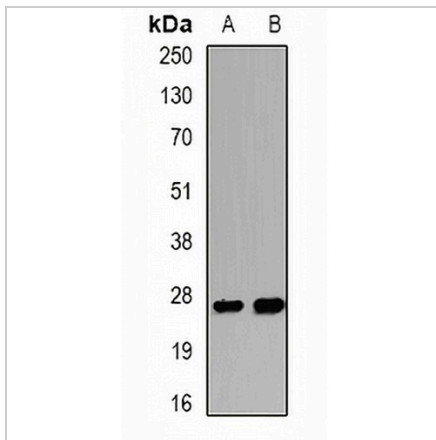
Description	Rabbit polyclonal antibody to WISP2
Specificity	Recognizes endogenous levels of WISP2 protein.
Antibody Type	Primary antibody
Immunogen	Recombinant fusion protein of human WISP2
Purification	The antibody was purified by immunogen affinity chromatography.
Molecular Weight	Predicted: 22; Observed: 27 kD
Form/Buffer	Liquid in 0.42% Potassium phosphate, 0.87% Sodium chloride, pH 7.3, 30% glycerol, and 0.01% sodium azide.
Alternative Names	CCN5; CT58; CTGFL; WNT1-inducible-signaling pathway protein 2; WISP-2; CCN family member 5; Connective tissue growth factor-like protein; CTGF-L; Connective tissue growth factor-related protein 58
Gene Symbol	WISP2
Entrez Gene	8839(Human); 22403(Mouse); 29576(Rat)
SwissProt	O76076(Human); Q9Z0G4(Mouse); Q9JHC6(Rat)

*AREX continuously optimizes our products. Webpage content may not reflect the latest updates. For inquiries, please contact info@arexbio.com or your local distributor.

*Clone Number, Reactivity, Source/Host and Clonality can be found in the product name and Key Features section above.

DATASHEET**WISP2 Rabbit Polyclonal Antibody**

CAT. NO. APA13106

DATA**STORAGE**

Store at 4°C short term. For long term storage, store at -20°C, avoiding freeze/thaw cycles.

NOTE

For Research Use Only. Not for diagnostic, therapeutics, prophylactic or in vivo use.