

DATASHEET

GSDML Rabbit Polyclonal Antibody

CAT. NO. APA13111

KEY FEATURES

Target	GSDML	Source / Host	Rabbit
Reactivity	Human	Clonality	Polyclonal
Applications	WB	Conjugation	Unconjugated
Form / Buffer	Liquid in 0.42% Potassium phosphate, 0.87% Sodium chloride, pH 7.3, 30% glycerol, and 0.01% sodium azide.		Storage at -20°C

BACKGROUND

Precursor of a pore-forming protein that acts as a downstream mediator of granzyme-mediated cell death . This form constitutes the precursor of the pore-forming protein: upon cleavage, the released N-terminal moiety (Gasdermin-B, N-terminal) binds to membranes and forms pores, triggering pyroptosis . Also acts as a regulator of epithelial cell repair independently of programmed cell death: translocates to the plasma membrane and promotes epithelial maintenance and repair by regulating PTK2/FAK-mediated phosphorylation of PDGFA .

APPLICATION

To ensure optimal assay performance, AREX recommends conducting reagent titration tailored to each testing system for optimal detection results.

WB	1:500 - 1:2000
----	----------------

*Results are sample-specific. Please refer to your local assay conditions and test parameters for reference.

PRODUCT OVERVIEW

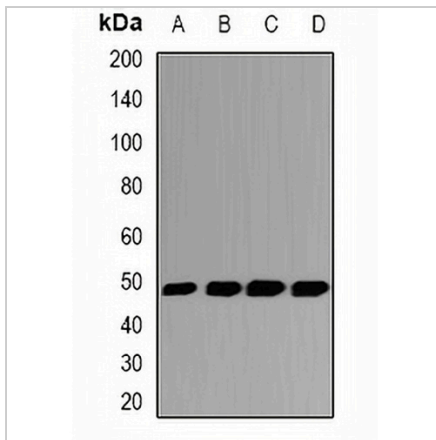
Description	Rabbit polyclonal antibody to GSDML
Specificity	Recognizes endogenous levels of GSDML protein.
Antibody Type	Primary antibody
Immunogen	Recombinant fusion protein of human GSDML
Purification	The antibody was purified by immunogen affinity chromatography.
Molecular Weight	Predicted: 46 kD; Observed: 46 kD
Form/Buffer	Liquid in 0.42% Potassium phosphate, 0.87% Sodium chloride, pH 7.3, 30% glycerol, and 0.01% sodium azide.
Alternative Names	GSDML; Gasdermin-B; Gasdermin-like protein
Gene Symbol	GSDMB
Entrez Gene	55876(Human)
SwissProt	Q8TAX9(Human)

*AREX continuously optimizes our products. Webpage content may not reflect the latest updates. For inquiries, please contact info@arexbio.com or your local distributor.

*Clone Number, Reactivity, Source/Host and Clonality can be found in the product name and Key Features section above.

DATASHEET**GSDML Rabbit Polyclonal Antibody**

CAT. NO. APA13111

DATA

Western blot analysis of GSDML expression in HeLa (A), HT29 (B), HL-60 (C), MDA-MB435 (D) whole cell lysates. (Predicted band size: 46 kD; Observed band size: 46 kD)

STORAGE

Store at 4°C short term. For long term storage, store at -20°C, avoiding freeze/thaw cycles.

NOTE

For Research Use Only. Not for diagnostic, therapeutics, prophylactic or in vivo use.