

## DATASHEET

# HRP2 Rabbit Polyclonal Antibody

CAT. NO. APA13114

### KEY FEATURES

Target	HRP2	Source / Host	Rabbit
Reactivity	Human, Mouse, Rat	Clonality	Polyclonal
Applications	WB, IF/ICC	Conjugation	Unconjugated
Form / Buffer	Liquid in 0.42% Potassium phosphate, 0.87% Sodium chloride, pH 7.3, 30% glycerol, and 0.01% sodium azide.		Storage at -20°C

### BACKGROUND

Acts as an epigenetic regulator of myogenesis in cooperation with DPF3a (isoform 2 of DPF3/BAF45C) . Associates with the BAF complex via its interaction with DPF3a and HDGFL2-DPF3a activate myogenic genes by increasing chromatin accessibility through recruitment of SMARCA4/BRG1/BAF190A (ATPase subunit of the BAF complex) to myogenic gene promoters . Promotes the repair of DNA double-strand breaks (DSBs) through the homologous recombination pathway by facilitating the recruitment of the DNA endonuclease RBBP8 to the DSBs . Preferentially binds to chromatin regions marked by H3K9me3, H3K27me3 and H3K36me2 . Involved in cellular growth control, through the regulation of cyclin D1 expression .

### APPLICATION

To ensure optimal assay performance, AREX recommends conducting reagent titration tailored to each testing system for optimal detection results.

WB	1:500 - 1:1000
IF/ICC	1:50 - 1:200

\*Results are sample-specific. Please refer to your local assay conditions and test parameters for reference.

### PRODUCT OVERVIEW

Description	Rabbit polyclonal antibody to HRP2
Specificity	Recognizes endogenous levels of HRP2 protein.
Antibody Type	Primary antibody
Immunogen	Recombinant fusion protein of human HRP2
Purification	The antibody was purified by immunogen affinity chromatography.
Molecular Weight	Predicted: 74 kD; Observed: 110 kD
Form/Buffer	Liquid in 0.42% Potassium phosphate, 0.87% Sodium chloride, pH 7.3, 30% glycerol, and 0.01% sodium azide.
Alternative Names	HDGF2; Hepatoma-derived growth factor-related protein 2; HRP-2; Hepatoma-derived growth factor 2; HDGF-2
Gene Symbol	HDGFRP2
Entrez Gene	84717(Human); 15193(Mouse); 171073(Rat)
SwissProt	Q7Z4V5(Human); Q3UMU9(Mouse); Q925G1(Rat)

\*AREX continuously optimizes our products. Webpage content may not reflect the latest updates. For inquiries, please contact [info@arexbio.com](mailto:info@arexbio.com) or your local distributor.

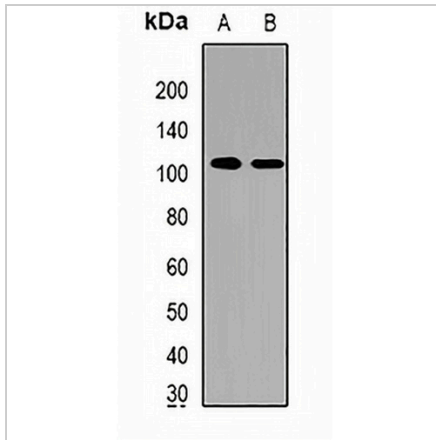
\*Clone Number, Reactivity, Source/Host and Clonality can be found in the product name and Key Features section above.

**DATASHEET**

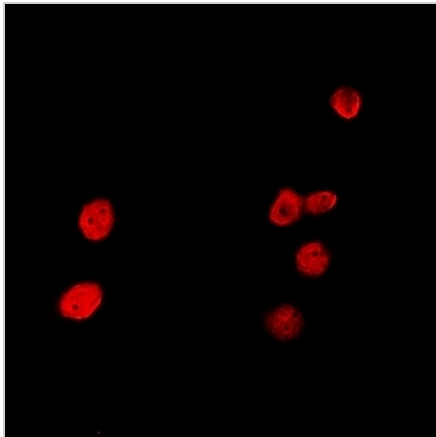
**HRP2 Rabbit Polyclonal Antibody**

CAT. NO. APA13114

**DATA**



Western blot analysis of HRP2 expression in HepG2 (A), HeLa (B) whole cell lysates. (Predicted band size: 74 kD; Observed band size: 110 kD)



Immunofluorescent analysis of HRP2 staining in A549 cells. Formalin-fixed cells were permeabilized with 0.1% Triton X-100 in TBS for 5-10 minutes and blocked with 3% BSA-PBS for 30 minutes at room temperature. Cells were probed with the primary antibody in 3% BSA-PBS and incubated overnight at 4 °C in a humidified chamber. Cells were washed with PBST and incubated with a DyLight 594-conjugated secondary antibody (red) in PBS at room temperature in the dark.

**STORAGE**

Store at 4°C short term. For long term storage, store at -20°C, avoiding freeze/thaw cycles.

**NOTE**

For Research Use Only. Not for diagnostic, therapeutics, prophylactic or in vivo use.