

DATASHEET

NERF Rabbit Polyclonal Antibody

CAT. NO. APA13115

KEY FEATURES

Target	NERF	Source / Host	Rabbit
Reactivity	Human, Mouse	Clonality	Polyclonal
Applications	WB	Conjugation	Unconjugated
Form / Buffer	Liquid in 0.42% Potassium phosphate, 0.87% Sodium chloride, pH 7.3, 30% glycerol, and 0.01% sodium azide.		Storage at -20°C

BACKGROUND

Isoform 1 transcriptionally activates the LYN and BLK promoters and acts synergistically with RUNX1 to transactivate the BLK promoter; Isoform 2 may function in repression of RUNX1-mediated transactivation.

APPLICATION

To ensure optimal assay performance, AREX recommends conducting reagent titration tailored to each testing system for optimal detection results.

WB	1:500 - 1:2000
----	----------------

*Results are sample-specific. Please refer to your local assay conditions and test parameters for reference.

PRODUCT OVERVIEW

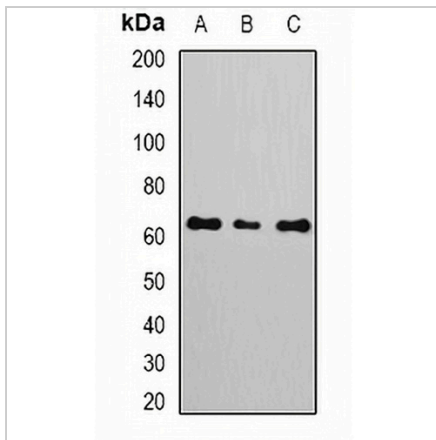
Description	Rabbit polyclonal antibody to NERF
Specificity	Recognizes endogenous levels of NERF protein.
Antibody Type	Primary antibody
Immunogen	Recombinant fusion protein of human NERF
Purification	The antibody was purified by immunogen affinity chromatography.
Molecular Weight	Predicted: 54; Observed: 64 kD
Form/Buffer	Liquid in 0.42% Potassium phosphate, 0.87% Sodium chloride, pH 7.3, 30% glycerol, and 0.01% sodium azide.
Alternative Names	NERF; ETS-related transcription factor Elf-2; E74-like factor 2; New ETS-related factor
Gene Symbol	ELF2
Entrez Gene	1998(Human); 69257(Mouse)
SwissProt	Q15723(Human); Q9JHC9(Mouse)

*AREX continuously optimizes our products. Webpage content may not reflect the latest updates. For inquiries, please contact info@arexbio.com or your local distributor.

*Clone Number, Reactivity, Source/Host and Clonality can be found in the product name and Key Features section above.

DATASHEET**NERF Rabbit Polyclonal Antibody**

CAT. NO. APA13115

DATA

Western blot analysis of NERF expression in A549 (A), MCF7 (B), Jurkat (C) whole cell lysates. (Predicted band size: 54; 56; 57; 62; 63 kD; Observed band size: 64 kD)

STORAGE

Store at 4°C short term. For long term storage, store at -20°C, avoiding freeze/thaw cycles.

NOTE

For Research Use Only. Not for diagnostic, therapeutics, prophylactic or in vivo use.