

**DATASHEET**

**Sp110 Rabbit Polyclonal Antibody**

CAT. NO. APA13116

**KEY FEATURES**

Target	Sp110	Source / Host	Rabbit
Reactivity	Human, Mouse, Rat	Clonality	Polyclonal
Applications	WB	Conjugation	Unconjugated
Form / Buffer	Liquid in 0.42% Potassium phosphate, 0.87% Sodium chloride, pH 7.3, 30% glycerol, and 0.01% sodium azide.	Storage	at-20°C

**BACKGROUND**

Transcription factor. May be a nuclear hormone receptor coactivator. Enhances transcription of genes with retinoic acid response elements (RARE).

**APPLICATION**

To ensure optimal assay performance, AREX recommends conducting reagent titration tailored to each testing system for optimal detection results.

WB	1:500 - 1:2000
----	----------------

\*Results are sample-specific. Please refer to your local assay conditions and test parameters for reference.

**PRODUCT OVERVIEW**

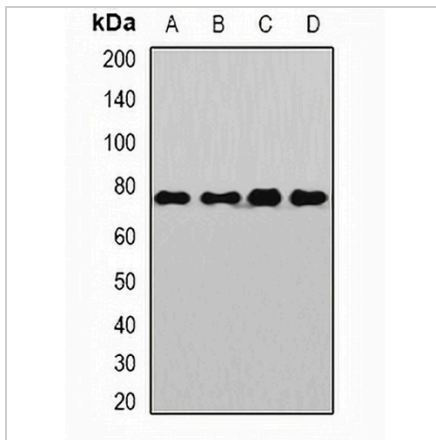
Description	Rabbit polyclonal antibody to Sp110
Specificity	Recognizes endogenous levels of Sp110 protein.
Antibody Type	Primary antibody
Immunogen	Recombinant fusion protein of human Sp110
Purification	The antibody was purified by immunogen affinity chromatography.
Molecular Weight	Predicted: 28; Observed: 78 kD
Form/Buffer	Liquid in 0.42% Potassium phosphate, 0.87% Sodium chloride, pH 7.3, 30% glycerol, and 0.01% sodium azide.
Alternative Names	Sp110 nuclear body protein; Interferon-induced protein 41/75; Speckled 110 kDa; Transcriptional coactivator Sp110
Gene Symbol	SP110
Entrez Gene	3431(Human); 109032(Mouse); 301570(Rat)
SwissProt	Q9HB58(Human); Q8BVK9(Mouse); Q3KRF1(Rat)

\*AREX continuously optimizes our products. Webpage content may not reflect the latest updates. For inquiries, please contact [info@arexbio.com](mailto:info@arexbio.com) or your local distributor.

\*Clone Number, Reactivity, Source/Host and Clonality can be found in the product name and Key Features section above.

**DATASHEET****Sp110 Rabbit Polyclonal Antibody**

CAT. NO. APA13116

**DATA**

Western blot analysis of Sp110 expression in Jurkat (A), HeLa (B), mouse liver (C), rat brain (D) whole cell lysates. (Predicted band size: 28; 46; 61; 62; 78; 81 kD; Observed band size: 78 kD)

**STORAGE**

Store at 4°C short term. For long term storage, store at -20°C, avoiding freeze/thaw cycles.

**NOTE**

For Research Use Only. Not for diagnostic, therapeutics, prophylactic or in vivo use.