

DATASHEET

Alpha-chimerin Rabbit Polyclonal Antibody

CAT. NO. APA13120

KEY FEATURES

Target	Alpha-chimerin	Source / Host	Rabbit
Reactivity	Human, Mouse, Rat	Clonality	Polyclonal
Applications	WB	Conjugation	Unconjugated
Form / Buffer	Liquid in 0.42% Potassium phosphate, 0.87% Sodium chloride, pH 7.3, 30% glycerol, and 0.01% sodium azide.		Storage at -20°C

BACKGROUND

GTPase-activating protein for p21-rac and a phorbol ester receptor. Involved in the assembly of neuronal locomotor circuits as a direct effector of EPHA4 in axon guidance.

APPLICATION

To ensure optimal assay performance, AREX recommends conducting reagent titration tailored to each testing system for optimal detection results.

WB	1:500 - 1:1000
----	----------------

*Results are sample-specific. Please refer to your local assay conditions and test parameters for reference.

PRODUCT OVERVIEW

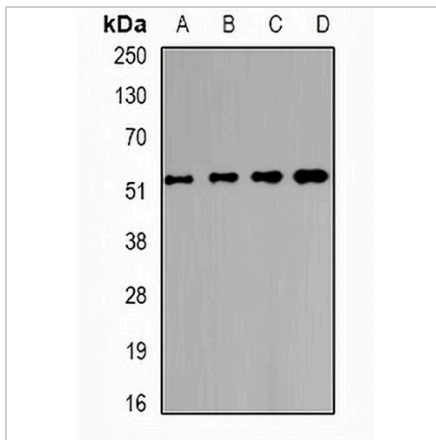
Description	Rabbit polyclonal antibody to Alpha-chimerin
Specificity	Recognizes endogenous levels of Alpha-chimerin protein.
Antibody Type	Primary antibody
Immunogen	Recombinant fusion protein of human Alpha-chimerin
Purification	The antibody was purified by immunogen affinity chromatography.
Molecular Weight	Predicted: 38; Observed: 53 kD
Form/Buffer	Liquid in 0.42% Potassium phosphate, 0.87% Sodium chloride, pH 7.3, 30% glycerol, and 0.01% sodium azide.
Alternative Names	ARHGAP2; CHN; N-chimaerin; A-chimaerin; Alpha-chimerin; N-chimerin; NC; Rho GTPase-activating protein 2
Gene Symbol	CHN1
Entrez Gene	1123(Human); 108699(Mouse); 84030(Rat)
SwissProt	P15882(Human); Q91V57(Mouse); P30337(Rat)

*AREX continuously optimizes our products. Webpage content may not reflect the latest updates. For inquiries, please contact info@arexbio.com or your local distributor.

*Clone Number, Reactivity, Source/Host and Clonality can be found in the product name and Key Features section above.

DATASHEET**Alpha-chimerin Rabbit Polyclonal Antibody**

CAT. NO. APA13120

DATA

Western blot analysis of Alpha-chimerin expression in Jurkat (A), MCF7 (B), mouse testis (C), rat brain (D) whole cell lysates. (Predicted band size: 38; 50; 53 kD; Observed band size: 53 kD)

STORAGE

Store at 4°C short term. For long term storage, store at -20°C, avoiding freeze/thaw cycles.

NOTE

For Research Use Only. Not for diagnostic, therapeutics, prophylactic or in vivo use.