

## DATASHEET

# CRIP1 Rabbit Polyclonal Antibody

CAT. NO. APA13121

### KEY FEATURES

Target	CRIP1	Source / Host	Rabbit
Reactivity	Human, Mouse, Rat	Clonality	Polyclonal
Applications	WB	Conjugation	Unconjugated
Form / Buffer	Liquid in 0.42% Potassium phosphate, 0.87% Sodium chloride, pH 7.3, 30% glycerol, and 0.01% sodium azide.		Storage at -20°C

### BACKGROUND

Seems to have a role in zinc absorption and may function as an intracellular zinc transport protein.

### APPLICATION

To ensure optimal assay performance, AREX recommends conducting reagent titration tailored to each testing system for optimal detection results.

WB	1:500 - 1:2000
----	----------------

\*Results are sample-specific. Please refer to your local assay conditions and test parameters for reference.

### PRODUCT OVERVIEW

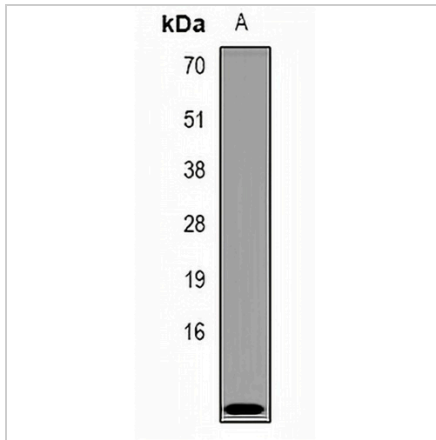
Description	Rabbit polyclonal antibody to CRIP1
Specificity	Recognizes endogenous levels of CRIP1 protein.
Antibody Type	Primary antibody
Immunogen	Recombinant fusion protein of human CRIP1
Purification	The antibody was purified by immunogen affinity chromatography.
Molecular Weight	Predicted: 8 kD; Observed: 13 kD
Form/Buffer	Liquid in 0.42% Potassium phosphate, 0.87% Sodium chloride, pH 7.3, 30% glycerol, and 0.01% sodium azide.
Alternative Names	CRIP; CRP1; Cysteine-rich protein 1; CRP-1; Cysteine-rich heart protein; CRHP; hCRHP; Cysteine-rich intestinal protein; CRIP
Gene Symbol	CRIP1
Entrez Gene	1396(Human); 12925(Mouse); 691657(Rat)
SwissProt	P50238(Human); P63254(Mouse); P63255(Rat)

\*AREX continuously optimizes our products. Webpage content may not reflect the latest updates. For inquiries, please contact [info@arexbio.com](mailto:info@arexbio.com) or your local distributor.

\*Clone Number, Reactivity, Source/Host and Clonality can be found in the product name and Key Features section above.

**DATASHEET****CRIP1 Rabbit Polyclonal Antibody**

CAT. NO. APA13121

**DATA**

Western blot analysis of CRIP1 expression in mouse lung (A) whole cell lysates. (Predicted band size: 8 kD; Observed band size: 13 kD)

**STORAGE**

Store at 4°C short term. For long term storage, store at -20°C, avoiding freeze/thaw cycles.

**NOTE**

For Research Use Only. Not for diagnostic, therapeutics, prophylactic or in vivo use.