

DATASHEET

Desmoplakin Rabbit Polyclonal Antibody

CAT. NO. APA13124

KEY FEATURES

Target	Desmoplakin	Source / Host	Rabbit
Reactivity	Human, Mouse	Clonality	Polyclonal
Applications	WB	Conjugation	Unconjugated
Form / Buffer	Liquid in 0.42% Potassium phosphate, 0.87% Sodium chloride, pH 7.3, 30% glycerol, and 0.01% sodium azide.		Storage at-20°C

BACKGROUND

A component of desmosome cell-cell junctions which are required for positive regulation of cellular adhesion . Critical for cell-cell adhesion in early stage blastocysts and progression through proamniotic cavity formation . Not required for preimplantation morphogenic process in blastocysts . Required for keratin filament anchoring at the desmosome junction and subsequent organization of the keratin intermediate filament network within the cytoplasm . Required for anchoring of desmosomes to the microtubule architecture, via its interaction with NIN . Plays a key role in adhesion and organization of the dermal epithelial barrier . Critical for the maintenance of the neural tube structure following formation and organization of the neuroepithelium .

APPLICATION

To ensure optimal assay performance, AREX recommends conducting reagent titration tailored to each testing system for optimal detection results.

WB	1:500 - 1:1000
----	----------------

*Results are sample-specific. Please refer to your local assay conditions and test parameters for reference.

PRODUCT OVERVIEW

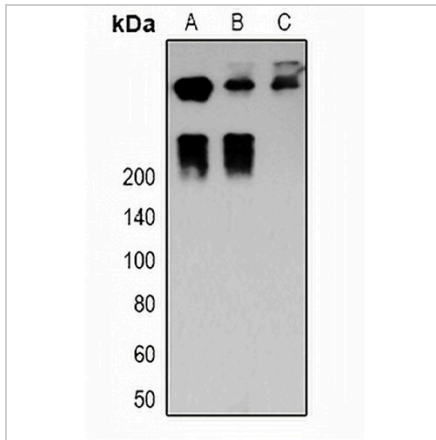
Description	Rabbit polyclonal antibody to Desmoplakin
Specificity	Recognizes endogenous levels of Desmoplakin protein.
Antibody Type	Primary antibody
Immunogen	KLH-conjugated synthetic peptide of human Desmoplakin
Purification	The antibody was purified by immunogen affinity chromatography.
Molecular Weight	Predicted: 260; Observed: 330; 280 kD
Form/Buffer	Liquid in 0.42% Potassium phosphate, 0.87% Sodium chloride, pH 7.3, 30% glycerol, and 0.01% sodium azide.
Alternative Names	Desmoplakin; DP; 250/210 kDa paraneoplastic pemphigus antigen
Gene Symbol	DSP
Entrez Gene	1832(Human); 109620(Mouse)
SwissProt	P15924(Human); E9Q557(Mouse)

*AREX continuously optimizes our products. Webpage content may not reflect the latest updates. For inquiries, please contact info@arexbio.com or your local distributor.

*Clone Number, Reactivity, Source/Host and Clonality can be found in the product name and Key Features section above.

DATASHEET**Desmoplakin Rabbit Polyclonal Antibody**

CAT. NO. APA13124

DATA

Western blot analysis of Desmoplakin expression in MCF7 (A), HeLa (B), mouse heart (C) whole cell lysates. (Predicted band size: 260; 278; 331 kD; Observed band size: 330; 280 kD)

STORAGE

Store at 4°C short term. For long term storage, store at -20°C, avoiding freeze/thaw cycles.

NOTE

For Research Use Only. Not for diagnostic, therapeutics, prophylactic or in vivo use.