

DATASHEET

ETFA Rabbit Polyclonal Antibody

CAT. NO. APA13128

KEY FEATURES

Target	ETFA	Source / Host	Rabbit
Reactivity	Human, Mouse, Rat	Clonality	Polyclonal
Applications	WB, IHC, IP	Conjugation	Unconjugated
Form / Buffer	Liquid in 0.42% Potassium phosphate, 0.87% Sodium chloride, pH 7.3, 30% glycerol, and 0.01% sodium azide.		Storage at-20°C

BACKGROUND

Heterodimeric electron transfer flavoprotein that accepts electrons from several mitochondrial dehydrogenases, including acyl-CoA dehydrogenases, glutaryl-CoA and sarcosine dehydrogenase . It transfers the electrons to the main mitochondrial respiratory chain via ETF-ubiquinone oxidoreductase (ETF dehydrogenase) . Required for normal mitochondrial fatty acid oxidation and normal amino acid metabolism .

APPLICATION

To ensure optimal assay performance, AREX recommends conducting reagent titration tailored to each testing system for optimal detection results.

WB	1:500 - 1:1000
IHC	1:50 - 1:200
IP	1:10 - 1:50

*Results are sample-specific. Please refer to your local assay conditions and test parameters for reference.

PRODUCT OVERVIEW

Description	Rabbit polyclonal antibody to ETFA
Specificity	Recognizes endogenous levels of ETFA protein.
Antibody Type	Primary antibody
Immunogen	Recombinant fusion protein of human ETFA
Purification	The antibody was purified by immunogen affinity chromatography.
Molecular Weight	Predicted: 30; Observed: 35 kD
Form/Buffer	Liquid in 0.42% Potassium phosphate, 0.87% Sodium chloride, pH 7.3, 30% glycerol, and 0.01% sodium azide.
Alternative Names	Electron transfer flavoprotein subunit alpha mitochondrial; Alpha-ETF
Gene Symbol	ETFA
Entrez Gene	2108(Human); 110842(Mouse); 300726(Rat)
SwissProt	P13804(Human); Q99LC5(Mouse); P13803(Rat)

*AREX continuously optimizes our products. Webpage content may not reflect the latest updates. For inquiries, please contact info@arexbio.com or your local distributor.

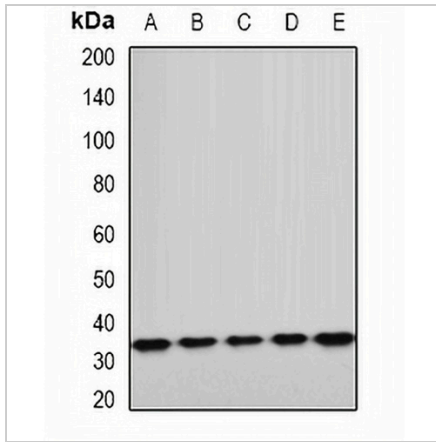
*Clone Number, Reactivity, Source/Host and Clonality can be found in the product name and Key Features section above.

DATASHEET

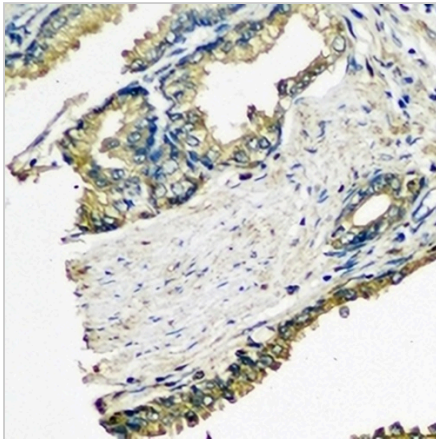
ETFA Rabbit Polyclonal Antibody

CAT. NO. APA13128

DATA



Western blot analysis of ETFA expression in A549 (A), HepG2 (B), mouse kidney (C), mouse heart (D), rat liver (E) whole cell lysates. (Predicted band size: 30; 35 kD; Observed band size: 35 kD)



Immunohistochemical analysis of ETFA staining in human prostate formalin fixed paraffin embedded tissue section. The section was pre-treated using heat mediated antigen retrieval with sodium citrate buffer (pH 6.0). The section was then incubated with the antibody at room temperature and detected using an HRP conjugated compact polymer system. DAB was used as the chromogen. The section was then counterstained with haematoxylin and mounted with DPX.

STORAGE

Store at 4°C short term. For long term storage, store at -20°C, avoiding freeze/thaw cycles.

NOTE

For Research Use Only. Not for diagnostic, therapeutics, prophylactic or in vivo use.