

DATASHEET

LOX Rabbit Polyclonal Antibody

CAT. NO. APA13132

KEY FEATURES

Target	LOX	Source / Host	Rabbit
Reactivity	Human, Mouse, Rat	Clonality	Polyclonal
Applications	WB, IHC, IF/ICC	Conjugation	Unconjugated
Form / Buffer	Liquid in 0.42% Potassium phosphate, 0.87% Sodium chloride, pH 7.3, 30% glycerol, and 0.01% sodium azide.		Storage at -20°C

BACKGROUND

Responsible for the post-translational oxidative deamination of peptidyl lysine residues in precursors to fibrous collagen and elastin . Regulator of Ras expression. May play a role in tumor suppression. Plays a role in the aortic wall architecture .

APPLICATION

To ensure optimal assay performance, AREX recommends conducting reagent titration tailored to each testing system for optimal detection results.

WB	1:500 - 1:2000
IHC	1:50 - 1:200
IF/ICC	1:50 - 1:200

*Results are sample-specific. Please refer to your local assay conditions and test parameters for reference.

PRODUCT OVERVIEW

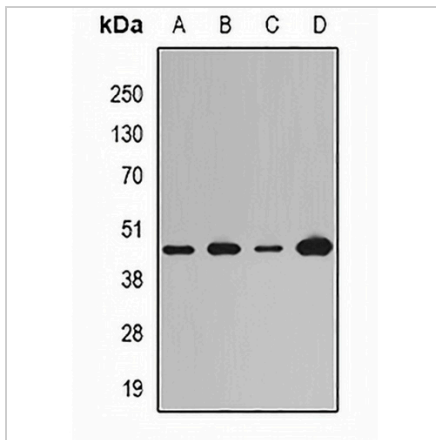
Description	Rabbit polyclonal antibody to LOX
Specificity	Recognizes endogenous levels of LOX protein.
Antibody Type	Primary antibody
Immunogen	KLH-conjugated synthetic peptide of human LOX
Purification	The antibody was purified by immunogen affinity chromatography.
Molecular Weight	Predicted: 46 kD; Observed: 47 kD
Form/Buffer	Liquid in 0.42% Potassium phosphate, 0.87% Sodium chloride, pH 7.3, 30% glycerol, and 0.01% sodium azide.
Alternative Names	Protein-lysine 6-oxidase; Lysyl oxidase
Gene Symbol	LOX
Entrez Gene	4015(Human); 16948(Mouse); 24914(Rat)
SwissProt	P28300(Human); P28301(Mouse); P16636(Rat)

*AREX continuously optimizes our products. Webpage content may not reflect the latest updates. For inquiries, please contact info@arexbio.com or your local distributor.

*Clone Number, Reactivity, Source/Host and Clonality can be found in the product name and Key Features section above.

DATASHEET**LOX Rabbit Polyclonal Antibody**

CAT. NO. APA13132

DATA

Western blot analysis of LOX expression in Jurkat (A), A431 (B), mouse heart (C), rat lung (D) whole cell lysates. (Predicted band size: 46 kD; Observed band size: 47 kD)

STORAGE

Store at 4°C short term. For long term storage, store at -20°C, avoiding freeze/thaw cycles.

NOTE

For Research Use Only. Not for diagnostic, therapeutics, prophylactic or in vivo use.