

**DATASHEET**

**Barttin Rabbit Polyclonal Antibody**

CAT. NO. APA13139

**KEY FEATURES**

Target	Barttin	Source / Host	Rabbit
Reactivity	Human, Mouse, Rat	Clonality	Polyclonal
Applications	WB	Conjugation	Unconjugated
Form / Buffer	Liquid in 0.42% Potassium phosphate, 0.87% Sodium chloride, pH 7.3, 30% glycerol, and 0.01% sodium azide.		Storage at-20°C

**BACKGROUND**

Regulatory subunit of anion-selective CLCNKA:BSND and CLCNKB:BSND heteromeric channels involved in basolateral chloride conductance along the nephron to achieve urine concentration and maintain systemic acid-base homeostasis, and in the stria vascularis of the inner ear to establish the endocochlear potential necessary for normal hearing . Most likely acts as a chaperone that allosterically regulates proper sorting of CLCNKA:BSND and CLCNKB:BSND channels at the basolateral plasma membrane domain and functional switch to ion conducting state. Mediates constitutive opening of channel common gates .

**APPLICATION**

To ensure optimal assay performance, AREX recommends conducting reagent titration tailored to each testing system for optimal detection results.

WB	1:500 - 1:1000
----	----------------

\*Results are sample-specific. Please refer to your local assay conditions and test parameters for reference.

**PRODUCT OVERVIEW**

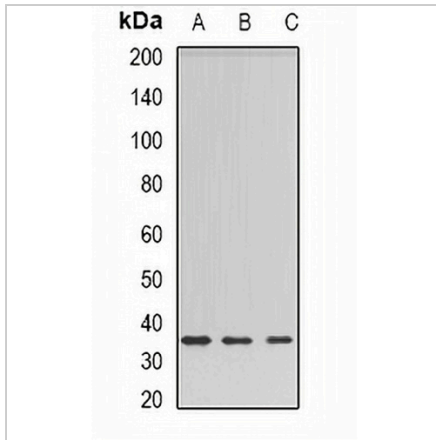
Description	Rabbit polyclonal antibody to Barttin
Specificity	Recognizes endogenous levels of Barttin protein.
Antibody Type	Primary antibody
Immunogen	Recombinant fusion protein of human Barttin
Purification	The antibody was purified by immunogen affinity chromatography.
Molecular Weight	Predicted: 35 kD; Observed: 35 kD
Form/Buffer	Liquid in 0.42% Potassium phosphate, 0.87% Sodium chloride, pH 7.3, 30% glycerol, and 0.01% sodium azide.
Alternative Names	BART; Barttin
Gene Symbol	BSND
Entrez Gene	7809(Human)
SwissProt	Q8WZ55(Human)

\*AREX continuously optimizes our products. Webpage content may not reflect the latest updates. For inquiries, please contact [info@arexbio.com](mailto:info@arexbio.com) or your local distributor.

\*Clone Number, Reactivity, Source/Host and Clonality can be found in the product name and Key Features section above.

**DATASHEET****Barttin Rabbit Polyclonal Antibody**

CAT. NO. APA13139

**DATA**

Western blot analysis of Barttin expression in HEK293T (A), rat liver (B), rat kidney (C) whole cell lysates. (Predicted band size: 35 kD; Observed band size: 35 kD)

**STORAGE**

Store at 4°C short term. For long term storage, store at -20°C, avoiding freeze/thaw cycles.

**NOTE**

For Research Use Only. Not for diagnostic, therapeutics, prophylactic or in vivo use.