

DATASHEET

DPM1 Rabbit Polyclonal Antibody

CAT. NO. APA13140

KEY FEATURES

Target	DPM1	Source / Host	Rabbit
Reactivity	Human, Mouse, Rat	Clonality	Polyclonal
Applications	WB, IF/ICC	Conjugation	Unconjugated
Form / Buffer	Liquid in 0.42% Potassium phosphate, 0.87% Sodium chloride, pH 7.3, 30% glycerol, and 0.01% sodium azide.		Storage at -20°C

BACKGROUND

Transfers mannose from GDP-mannose to dolichol monophosphate to form dolichol phosphate mannose (Dol-P-Man) which is the mannosyl donor in pathways leading to N-glycosylation, glycosyl phosphatidylinositol membrane anchoring, and O-mannosylation of proteins; catalytic subunit of the dolichol-phosphate mannose (DPM) synthase complex.

APPLICATION

To ensure optimal assay performance, AREX recommends conducting reagent titration tailored to each testing system for optimal detection results.

WB	1:500 - 1:2000
IF/ICC	1:50 - 1:200

*Results are sample-specific. Please refer to your local assay conditions and test parameters for reference.

PRODUCT OVERVIEW

Description	Rabbit polyclonal antibody to DPM1
Specificity	Recognizes endogenous levels of DPM1 protein.
Antibody Type	Primary antibody
Immunogen	Recombinant fusion protein of human DPM1
Purification	The antibody was purified by immunogen affinity chromatography.
Molecular Weight	Predicted: 29 kD; Observed: 30 kD
Form/Buffer	Liquid in 0.42% Potassium phosphate, 0.87% Sodium chloride, pH 7.3, 30% glycerol, and 0.01% sodium azide.
Alternative Names	Dolichol-phosphate mannosyltransferase subunit 1; Dolichol-phosphate mannose synthase subunit 1; DPM synthase subunit 1; Dolichyl-phosphate beta-D-mannosyltransferase subunit 1; Mannose-P-dolichol synthase subunit 1; MPD synthase subunit 1
Gene Symbol	DPM1
Entrez Gene	8813(Human); 13480(Mouse)
SwissProt	O60762(Human); O70152(Mouse)

*AREX continuously optimizes our products. Webpage content may not reflect the latest updates. For inquiries, please contact info@arex.bio or your local distributor.

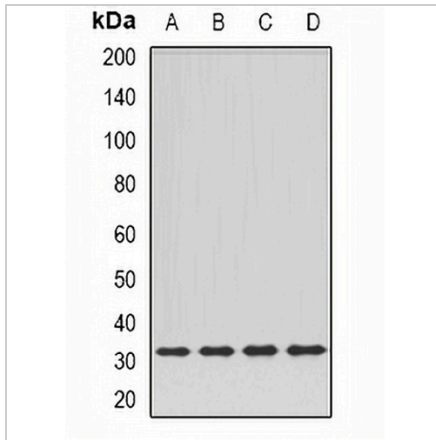
*Clone Number, Reactivity, Source/Host and Clonality can be found in the product name and Key Features section above.

DATASHEET

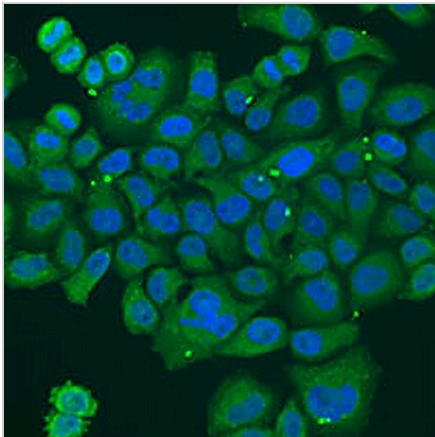
DPM1 Rabbit Polyclonal Antibody

CAT. NO. APA13140

DATA



Western blot analysis of DPM1 expression in Hela (A), SKOV3 (B), mouse kidney (C), rat liver (D) whole cell lysates. (Predicted band size: 29 kD; Observed band size: 30 kD)



Immunofluorescent analysis of DPM1 staining in U2OS cells. Formalin-fixed cells were permeabilized with 0.1% Triton X-100 in TBS for 5-10 minutes and blocked with 3% BSA-PBS for 30 minutes at room temperature. Cells were probed with the primary antibody in 3% BSA-PBS and incubated overnight at 4 °C in a humidified chamber. Cells were washed with PBST and incubated with a AREX® Fluor 488 -conjugated secondary antibody (green) in PBS at room temperature in the dark. DAPI was used to stain the cell nuclei (blue).

STORAGE

Store at 4°C short term. For long term storage, store at -20°C, avoiding freeze/thaw cycles.

NOTE

For Research Use Only. Not for diagnostic, therapeutics, prophylactic or in vivo use.