

DATASHEET

NAT8 Rabbit Polyclonal Antibody

CAT. NO. APA13142

KEY FEATURES

Target	NAT8	Source / Host	Rabbit
Reactivity	Human, Mouse, Rat	Clonality	Polyclonal
Applications	WB, IHC	Conjugation	Unconjugated
Form / Buffer	Liquid in 0.42% Potassium phosphate, 0.87% Sodium chloride, pH 7.3, 30% glycerol, and 0.01% sodium azide.		Storage at-20°C

BACKGROUND

Endoplasmic reticulum (ER)-membrane-bound lysine N-acetyltransferase catalyzing the N6-acetylation of lysine residues in the lumen of the ER in various proteins, including PROM1 and BACE1, using acetyl-CoA as acetyl donor -membrane-bound lysine N-acetyltransferase catalyzing the N6-acetylation of lysine residues in the lumen of the ER in various proteins, including PROM1 and BACE1, using acetyl-CoA as acetyl donor . Thereby, may regulate apoptosis through the acetylation and the regulation of the expression of PROM1 . May also regulate amyloid beta-peptide secretion through acetylation of BACE1 and the regulation of its expression in neurons . N(6)-lysine acetylation in the ER maintains protein homeostasis and regulates reticulophagy .

APPLICATION

To ensure optimal assay performance, AREX recommends conducting reagent titration tailored to each testing system for optimal detection results.

WB	1:500 - 1:2000
IHC	1:50 - 1:200

*Results are sample-specific. Please refer to your local assay conditions and test parameters for reference.

PRODUCT OVERVIEW

Description	Rabbit polyclonal antibody to NAT8
Specificity	Recognizes endogenous levels of NAT8 protein.
Antibody Type	Primary antibody
Immunogen	Recombinant fusion protein of human NAT8
Purification	The antibody was purified by immunogen affinity chromatography.
Molecular Weight	Predicted: 25 kD; Observed: 26 kD
Form/Buffer	Liquid in 0.42% Potassium phosphate, 0.87% Sodium chloride, pH 7.3, 30% glycerol, and 0.01% sodium azide.
Alternative Names	CML1; GLA; TSC501; Probable N-acetyltransferase 8; Camello-like protein 1
Gene Symbol	NAT8
Entrez Gene	9027(Human); 68396(Mouse); 64570(Rat)
SwissProt	Q9UHE5(Human); Q9JIY7(Mouse); Q9QXT3(Rat)

*AREX continuously optimizes our products. Webpage content may not reflect the latest updates. For inquiries, please contact info@arexbio.com or your local distributor.

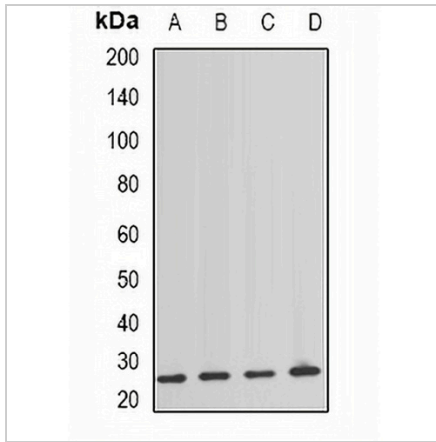
*Clone Number, Reactivity, Source/Host and Clonality can be found in the product name and Key Features section above.

DATASHEET

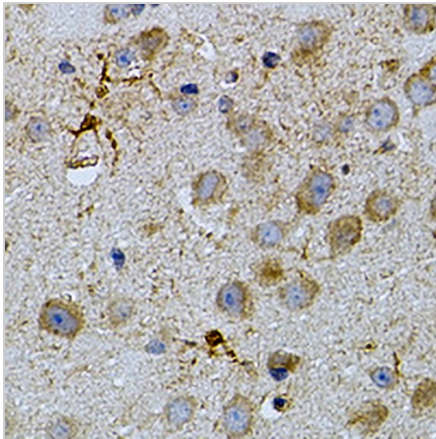
NAT8 Rabbit Polyclonal Antibody

CAT. NO. APA13142

DATA



Western blot analysis of NAT8 expression in HEK293T (A), mouse spleen (B), mouse lung (C), rat kidney (D) whole cell lysates. (Predicted band size: 25 kD; Observed band size: 26 kD)



Immunohistochemical analysis of NAT8 staining in mouse brain formalin fixed paraffin embedded tissue section. The section was pre-treated using heat mediated antigen retrieval with sodium citrate buffer (pH 6.0). The section was then incubated with the antibody at room temperature and detected using an HRP conjugated compact polymer system. DAB was used as the chromogen. The section was then counterstained with haematoxylin and mounted with DPX.

STORAGE

Store at 4°C short term. For long term storage, store at -20°C, avoiding freeze/thaw cycles.

NOTE

For Research Use Only. Not for diagnostic, therapeutics, prophylactic or in vivo use.