

**DATASHEET**

**TFG Rabbit Polyclonal Antibody**

CAT. NO. APA13145

**KEY FEATURES**

Target	TFG	Source / Host	Rabbit
Reactivity	Human, Mouse, Rat	Clonality	Polyclonal
Applications	WB	Conjugation	Unconjugated
Form / Buffer	Liquid in 0.42% Potassium phosphate, 0.87% Sodium chloride, pH 7.3, 30% glycerol, and 0.01% sodium azide.	Storage	at-20°C

**BACKGROUND**

Plays a role in the normal dynamic function of the endoplasmic reticulum (ER) and its associated microtubules and its associated microtubules . Required for secretory cargo traffic from the endoplasmic reticulum to the Golgi apparatus .

**APPLICATION**

To ensure optimal assay performance, AREX recommends conducting reagent titration tailored to each testing system for optimal detection results.

WB	1:500 - 1:2000
----	----------------

\*Results are sample-specific. Please refer to your local assay conditions and test parameters for reference.

**PRODUCT OVERVIEW**

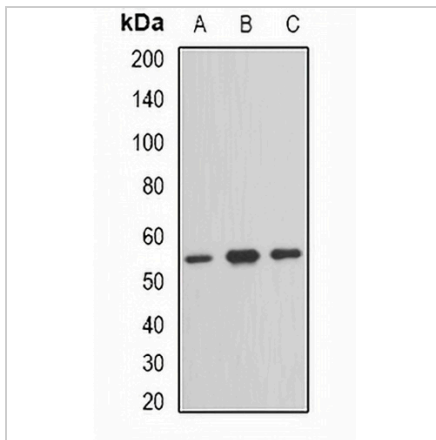
Description	Rabbit polyclonal antibody to TFG
Specificity	Recognizes endogenous levels of TFG protein.
Antibody Type	Primary antibody
Immunogen	Recombinant fusion protein of human TFG
Purification	The antibody was purified by immunogen affinity chromatography.
Molecular Weight	Predicted: 30; Observed: 55 kD
Form/Buffer	Liquid in 0.42% Potassium phosphate, 0.87% Sodium chloride, pH 7.3, 30% glycerol, and 0.01% sodium azide.
Alternative Names	Protein TFG; TRK-fused gene protein
Gene Symbol	TFG
Entrez Gene	10342(Human)
SwissProt	Q92734(Human)

\*AREX continuously optimizes our products. Webpage content may not reflect the latest updates. For inquiries, please contact [info@arexbio.com](mailto:info@arexbio.com) or your local distributor.

\*Clone Number, Reactivity, Source/Host and Clonality can be found in the product name and Key Features section above.

**DATASHEET****TFG Rabbit Polyclonal Antibody**

CAT. NO. APA13145

**DATA**

Western blot analysis of TFG expression in HeLa (A), HepG2 (B), mouse brain (C) whole cell lysates. (Predicted band size: 30; 31; 43 kD; Observed band size: 55 kD)

**STORAGE**

Store at 4°C short term. For long term storage, store at -20°C, avoiding freeze/thaw cycles.

**NOTE**

For Research Use Only. Not for diagnostic, therapeutics, prophylactic or in vivo use.