

DATASHEET

AHCYL1 Rabbit Polyclonal Antibody

CAT. NO. APA13146

KEY FEATURES

Target	AHCYL1	Source / Host	Rabbit
Reactivity	Human, Mouse	Clonality	Polyclonal
Applications	WB, IHC	Conjugation	Unconjugated
Form / Buffer	Liquid in 0.42% Potassium phosphate, 0.87% Sodium chloride, pH 7.3, 30% glycerol, and 0.01% sodium azide.		Storage at -20°C

BACKGROUND

Multifaceted cellular regulator which coordinates several essential cellular functions including regulation of epithelial HCO₃⁻ and fluid secretion, mRNA processing and DNA replication. Regulates ITPR1 sensitivity to inositol 1,4,5-trisphosphate, competing for the common binding site and acting as endogenous 'pseudoligand' whose inhibitory activity can be modulated by its phosphorylation status. Promotes the formation of contact points between the endoplasmic reticulum (ER) and mitochondria, facilitating transfer of Ca²⁺ from the ER to mitochondria and fluid secretion, mRNA processing and DNA replication.

APPLICATION

To ensure optimal assay performance, AREX recommends conducting reagent titration tailored to each testing system for optimal detection results.

WB	1:500 - 1:2000
IHC	1:50 - 1:200

*Results are sample-specific. Please refer to your local assay conditions and test parameters for reference.

PRODUCT OVERVIEW

Description	Rabbit polyclonal antibody to AHCYL1
Specificity	Recognizes endogenous levels of AHCYL1 protein.
Antibody Type	Primary antibody
Immunogen	Recombinant fusion protein of human AHCYL1
Purification	The antibody was purified by immunogen affinity chromatography.
Molecular Weight	Predicted: 58 kD; Observed: 59 kD
Form/Buffer	Liquid in 0.42% Potassium phosphate, 0.87% Sodium chloride, pH 7.3, 30% glycerol, and 0.01% sodium azide.
Alternative Names	DCAL; XPVKONA; Putative adenosylhomocysteinase 2; AdoHcyase 2; DC-expressed AHCY-like molecule; S-adenosyl-L-homocysteine hydrolase 2; S-adenosylhomocysteine hydrolase-like protein 1
Gene Symbol	AHCYL1
Entrez Gene	10768(Human); 229709(Mouse)
SwissProt	O43865(Human); Q80SW1(Mouse)

*AREX continuously optimizes our products. Webpage content may not reflect the latest updates. For inquiries, please contact info@arexbio.com or your local distributor.

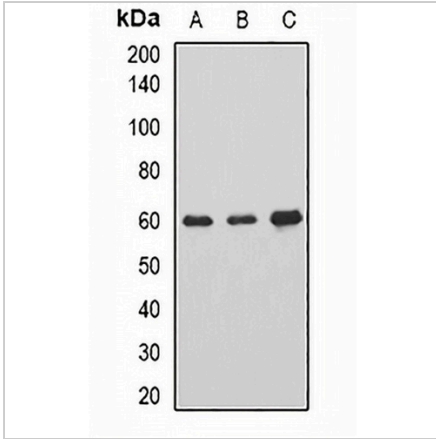
*Clone Number, Reactivity, Source/Host and Clonality can be found in the product name and Key Features section above.

DATASHEET

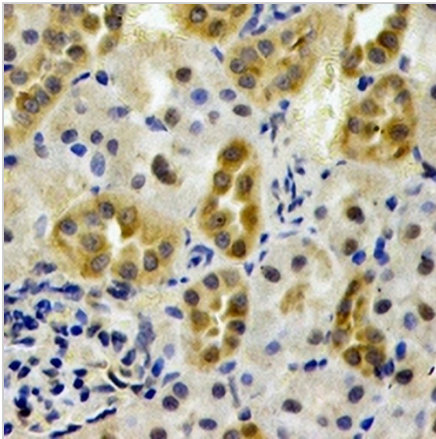
AHCYL1 Rabbit Polyclonal Antibody

CAT. NO. APA13146

DATA



Western blot analysis of AHCYL1 expression in SKOV3 (A), mouse brain (B), rat spinal cord (C) whole cell lysates. (Predicted band size: 58 kD; Observed band size: 59 kD)



Immunohistochemical analysis of AHCYL1 staining in rat kidney formalin fixed paraffin embedded tissue section. The section was pre-treated using heat mediated antigen retrieval with sodium citrate buffer (pH 6.0). The section was then incubated with the antibody at room temperature and detected using an HRP conjugated compact polymer system. DAB was used as the chromogen. The section was then counterstained with haematoxylin and mounted with DPX.

STORAGE

Store at 4°C short term. For long term storage, store at -20°C, avoiding freeze/thaw cycles.

NOTE

For Research Use Only. Not for diagnostic, therapeutics, prophylactic or in vivo use.