

DATASHEET

WDR6 Rabbit Polyclonal Antibody

CAT. NO. APA13150

KEY FEATURES

Target	WDR6	Source / Host	Rabbit
Reactivity	Human, Mouse, Rat	Clonality	Polyclonal
Applications	WB	Conjugation	Unconjugated
Form / Buffer	Liquid in 0.42% Potassium phosphate, 0.87% Sodium chloride, pH 7.3, 30% glycerol, and 0.01% sodium azide.		Storage at-20°C

BACKGROUND

Together with methyltransferase FTSJ1, methylates the 2'-O-ribose of nucleotides at position 34 of the tRNA anticodon loop of substrate tRNAs . Required for the correct positioning of the substrate tRNA for methylation . Required to suppress amino acid starvation-induced autophagy . Enhances the STK11/LKB1-induced cell growth suppression activity .

APPLICATION

To ensure optimal assay performance, AREX recommends conducting reagent titration tailored to each testing system for optimal detection results.

WB	1:500 - 1:2000
----	----------------

*Results are sample-specific. Please refer to your local assay conditions and test parameters for reference.

PRODUCT OVERVIEW

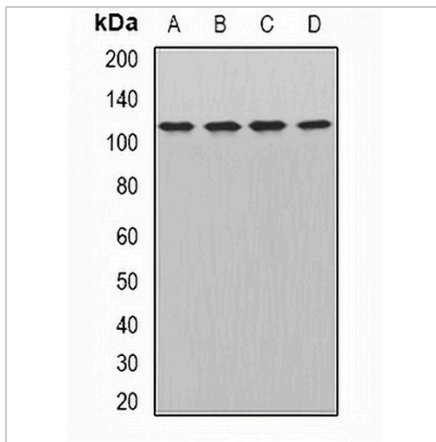
Description	Rabbit polyclonal antibody to WDR6
Specificity	Recognizes endogenous levels of WDR6 protein.
Antibody Type	Primary antibody
Immunogen	KLH-conjugated synthetic peptide of human WDR6
Purification	The antibody was purified by immunogen affinity chromatography.
Molecular Weight	Predicted: 121 kD; Observed: 122 kD
Form/Buffer	Liquid in 0.42% Potassium phosphate, 0.87% Sodium chloride, pH 7.3, 30% glycerol, and 0.01% sodium azide.
Alternative Names	WD repeat-containing protein 6
Gene Symbol	WDR6
Entrez Gene	11180(Human); 83669(Mouse); 301007(Rat)
SwissProt	Q9NNW5(Human); Q99ME2(Mouse); Q5XFW6(Rat)

*AREX continuously optimizes our products. Webpage content may not reflect the latest updates. For inquiries, please contact info@arexbio.com or your local distributor.

*Clone Number, Reactivity, Source/Host and Clonality can be found in the product name and Key Features section above.

DATASHEET**WDR6 Rabbit Polyclonal Antibody**

CAT. NO. APA13150

DATA

Western blot analysis of WDR6 expression in Hela (A), HepG2 (B), mouse brain (C), mouse liver (D) whole cell lysates. (Predicted band size: 121 kD; Observed band size: 122 kD)

STORAGE

Store at 4°C short term. For long term storage, store at -20°C, avoiding freeze/thaw cycles.

NOTE

For Research Use Only. Not for diagnostic, therapeutics, prophylactic or in vivo use.