

DATASHEET

GABARAPL1 Rabbit Polyclonal Antibody

CAT. NO. APA13155

KEY FEATURES

Target	GABARAPL1	Source / Host	Rabbit
Reactivity	Human, Mouse, Rat	Clonality	Polyclonal
Applications	WB	Conjugation	Unconjugated
Form / Buffer	Liquid in 0.42% Potassium phosphate, 0.87% Sodium chloride, pH 7.3, 30% glycerol, and 0.01% sodium azide.		Storage at-20°C

BACKGROUND

Ubiquitin-like modifier that increases cell-surface expression of kappa-type opioid receptor through facilitating anterograde intracellular trafficking of the receptor . Involved in formation of autophagosomal vacuoles . While LC3s are involved in elongation of the phagophore membrane, the GABARAP/GATE-16 subfamily is essential for a later stage in autophagosome maturation . Through its interaction with the reticulophagy receptor TEX264, participates in the remodeling of subdomains of the endoplasmic reticulum into autophagosomes upon nutrient stress, which then fuse with lysosomes for endoplasmic reticulum turnover .

APPLICATION

To ensure optimal assay performance, AREX recommends conducting reagent titration tailored to each testing system for optimal detection results.

WB	1:500 - 1:2000
----	----------------

*Results are sample-specific. Please refer to your local assay conditions and test parameters for reference.

PRODUCT OVERVIEW

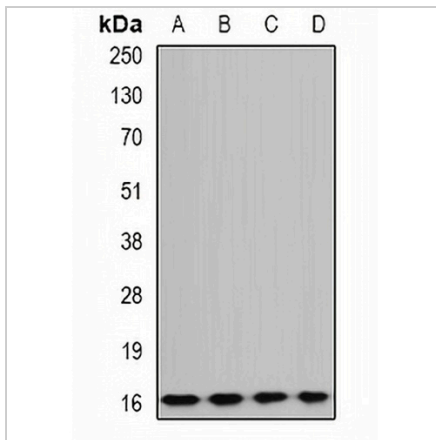
Description	Rabbit polyclonal antibody to GABARAPL1
Specificity	Recognizes endogenous levels of GABARAPL1 protein.
Antibody Type	Primary antibody
Immunogen	Recombinant fusion protein of human GABARAPL1
Purification	The antibody was purified by immunogen affinity chromatography.
Molecular Weight	Predicted: 14; Observed: 16 kD
Form/Buffer	Liquid in 0.42% Potassium phosphate, 0.87% Sodium chloride, pH 7.3, 30% glycerol, and 0.01% sodium azide.
Alternative Names	GEC1; Gamma-aminobutyric acid receptor-associated protein-like 1; Early estrogen-regulated protein; GABA(A) receptor-associated protein-like 1; Glandular epithelial cell protein 1; GEC-1
Gene Symbol	GABARAPL1
Entrez Gene	23710(Human); 57436(Mouse); 689161(Rat)
SwissProt	Q9H0R8(Human); Q8R3R8(Mouse); Q0VGK0(Rat)

*AREX continuously optimizes our products. Webpage content may not reflect the latest updates. For inquiries, please contact info@arexbio.com or your local distributor.

*Clone Number, Reactivity, Source/Host and Clonality can be found in the product name and Key Features section above.

DATASHEET**GABARAPL1 Rabbit Polyclonal Antibody**

CAT. NO. APA13155

DATA

Western blot analysis of GABARAPL1 expression in BT474 (A), mouse liver (B), rat brain (C), rat kidney (D) whole cell lysates. (Predicted band size: 14; 17 kD; Observed band size: 16 kD)

STORAGE

Store at 4°C short term. For long term storage, store at -20°C, avoiding freeze/thaw cycles.

NOTE

For Research Use Only. Not for diagnostic, therapeutics, prophylactic or in vivo use.