

**DATASHEET**

**ARP3-beta Rabbit Polyclonal Antibody**

CAT. NO. APA13161

**KEY FEATURES**

Target	ARP3-beta	Source / Host	Rabbit
Reactivity	Human, Mouse	Clonality	Polyclonal
Applications	WB	Conjugation	Unconjugated
Form / Buffer	Liquid in 0.42% Potassium phosphate, 0.87% Sodium chloride, pH 7.3, 30% glycerol, and 0.01% sodium azide.		Storage at -20°C

**BACKGROUND**

Plays a role in the organization of the actin cytoskeleton. May function as ATP-binding component of the Arp2/3 complex which is involved in regulation of actin polymerization and together with an activating nucleation-promoting factor (NPF) mediates the formation of branched actin networks. May decrease the metastatic potential of tumors.

**APPLICATION**

To ensure optimal assay performance, AREX recommends conducting reagent titration tailored to each testing system for optimal detection results.

WB	1:500 - 1:2000
----	----------------

\*Results are sample-specific. Please refer to your local assay conditions and test parameters for reference.

**PRODUCT OVERVIEW**

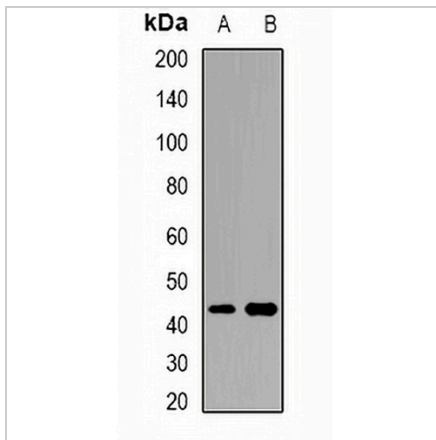
Description	Rabbit polyclonal antibody to ARP3-beta
Specificity	Recognizes endogenous levels of ARP3-beta protein.
Antibody Type	Primary antibody
Immunogen	Recombinant fusion protein of human ARP3-beta
Purification	The antibody was purified by immunogen affinity chromatography.
Molecular Weight	Predicted: 47 kD; Observed: 47 kD
Form/Buffer	Liquid in 0.42% Potassium phosphate, 0.87% Sodium chloride, pH 7.3, 30% glycerol, and 0.01% sodium azide.
Alternative Names	ARP11; ARP4; Actin-related protein 3B; ARP3-beta; Actin-like protein 3B; Actin-related protein ARP4
Gene Symbol	ACTR3B
Entrez Gene	57180(Human); 242894(Mouse)
SwissProt	Q9P1U1(Human); Q641P0(Mouse)

\*AREX continuously optimizes our products. Webpage content may not reflect the latest updates. For inquiries, please contact [info@arexbio.com](mailto:info@arexbio.com) or your local distributor.

\*Clone Number, Reactivity, Source/Host and Clonality can be found in the product name and Key Features section above.

**DATASHEET****ARP3-beta Rabbit Polyclonal Antibody**

CAT. NO. APA13161

**DATA**

Western blot analysis of ARP3-beta expression in Hela (A), mouse brain (B) whole cell lysates. (Predicted band size: 47 kD; Observed band size: 47 kD)

**STORAGE**

Store at 4°C short term. For long term storage, store at -20°C, avoiding freeze/thaw cycles.

**NOTE**

For Research Use Only. Not for diagnostic, therapeutics, prophylactic or in vivo use.