

DATASHEET

TMEM184A Rabbit Polyclonal Antibody

CAT. NO. APA13170

KEY FEATURES

Target	TMEM184A	Source / Host	Rabbit
Reactivity	Human, Mouse, Rat	Clonality	Polyclonal
Applications	WB	Conjugation	Unconjugated
Form / Buffer	Liquid in 0.42% Potassium phosphate, 0.87% Sodium chloride, pH 7.3, 30% glycerol, and 0.01% sodium azide.		Storage at-20°C

BACKGROUND

Acts as a heparin receptor in vascular cells . May be involved in vesicle transport in exocrine cells and Sertoli cells .

APPLICATION

To ensure optimal assay performance, AREX recommends conducting reagent titration tailored to each testing system for optimal detection results.

WB	1:500 - 1:2000
----	----------------

*Results are sample-specific. Please refer to your local assay conditions and test parameters for reference.

PRODUCT OVERVIEW

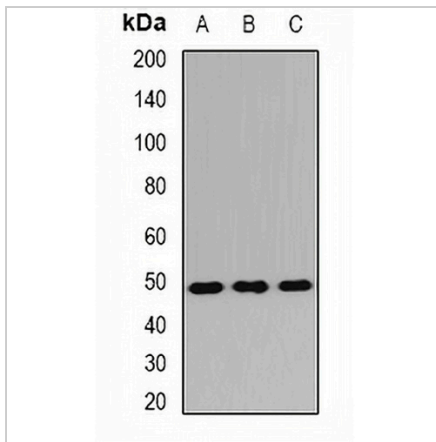
Description	Rabbit polyclonal antibody to TMEM184A
Specificity	Recognizes endogenous levels of TMEM184A protein.
Antibody Type	Primary antibody
Immunogen	Recombinant fusion protein of human TMEM184A
Purification	The antibody was purified by immunogen affinity chromatography.
Molecular Weight	Predicted: 45 kD; Observed: 46 kD
Form/Buffer	Liquid in 0.42% Potassium phosphate, 0.87% Sodium chloride, pH 7.3, 30% glycerol, and 0.01% sodium azide.
Alternative Names	Transmembrane protein 184A
Gene Symbol	TMEM184A
Entrez Gene	202915(Human); 231832(Mouse); 304325(Rat)
SwissProt	Q6ZMB5(Human); Q3UFJ6(Mouse); Q4QQS1(Rat)

*AREX continuously optimizes our products. Webpage content may not reflect the latest updates. For inquiries, please contact info@arexbio.com or your local distributor.

*Clone Number, Reactivity, Source/Host and Clonality can be found in the product name and Key Features section above.

DATASHEET**TMEM184A Rabbit Polyclonal Antibody**

CAT. NO. APA13170

DATA

Western blot analysis of TMEM184A expression in mouse liver (A), mouse kidney (B), rat lung (C) whole cell lysates. (Predicted band size: 45 kD; Observed band size: 46 kD)

STORAGE

Store at 4°C short term. For long term storage, store at -20°C, avoiding freeze/thaw cycles.

NOTE

For Research Use Only. Not for diagnostic, therapeutics, prophylactic or in vivo use.