

**DATASHEET**

**CALHM1 Rabbit Polyclonal Antibody**

CAT. NO. APA13171

**KEY FEATURES**

Target	CALHM1	Source / Host	Rabbit
Reactivity	Human, Rat	Clonality	Polyclonal
Applications	WB, IHC	Conjugation	Unconjugated
Form / Buffer	Liquid in 0.42% Potassium phosphate, 0.87% Sodium chloride, pH 7.3, 30% glycerol, and 0.01% sodium azide.		Storage at -20°C

**BACKGROUND**

Pore-forming subunit of gustatory voltage-gated ion channels required for sensory perception of sweet, bitter and umami tastes . With CALHM3 forms a fast-activating voltage-gated ATP-release channel in type II taste bud cells, ATP acting as a neurotransmitter to activate afferent neural gustatory pathways . Acts both as a voltage-gated and calcium-activated ion channel: mediates neuronal excitability in response to membrane depolarization and low extracellular Ca(2+) concentration . Has poor ion selectivity and forms a wide pore (around 14 Angstroms) that mediates permeation of small ions including Ca(2+), Na(+), K(+) and Cl(-), as well as larger ions such as ATP(4-) . Mediates Ca(2+) influx and downstream activation of the ERK1 and ERK2 cascade in neurons .

**APPLICATION**

To ensure optimal assay performance, AREX recommends conducting reagent titration tailored to each testing system for optimal detection results.

WB	1:500 - 1:2000
IHC	1:50 - 1:200

\*Results are sample-specific. Please refer to your local assay conditions and test parameters for reference.

**PRODUCT OVERVIEW**

Description	Rabbit polyclonal antibody to CALHM1
Specificity	Recognizes endogenous levels of CALHM1 protein.
Antibody Type	Primary antibody
Immunogen	Recombinant fusion protein of human CALHM1
Purification	The antibody was purified by immunogen affinity chromatography.
Molecular Weight	Predicted: 38 kD; Observed: 45 kD
Form/Buffer	Liquid in 0.42% Potassium phosphate, 0.87% Sodium chloride, pH 7.3, 30% glycerol, and 0.01% sodium azide.
Alternative Names	FAM26C; Calcium homeostasis modulator protein 1; Protein FAM26C
Gene Symbol	CALHM1
Entrez Gene	255022(Human)
SwissProt	Q8IU99(Human)

\*AREX continuously optimizes our products. Webpage content may not reflect the latest updates. For inquiries, please contact [info@arexbio.com](mailto:info@arexbio.com) or your local distributor.

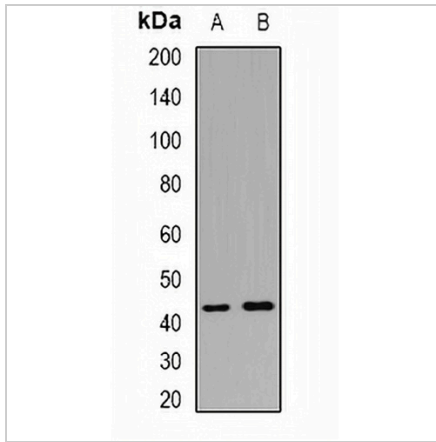
\*Clone Number, Reactivity, Source/Host and Clonality can be found in the product name and Key Features section above.

**DATASHEET**

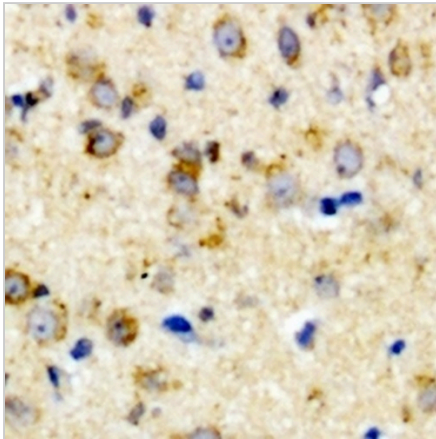
**CALHM1 Rabbit Polyclonal Antibody**

CAT. NO. APA13171

**DATA**



Western blot analysis of CALHM1 expression in SHSY5Y (A), HepG2 (B) whole cell lysates. (Predicted band size: 38 kD; Observed band size: 45 kD)



Immunohistochemical analysis of CALHM1 staining in rat brain formalin fixed paraffin embedded tissue section. The section was pre-treated using heat mediated antigen retrieval with sodium citrate buffer (pH 6.0). The section was then incubated with the antibody at room temperature and detected using an HRP conjugated compact polymer system. DAB was used as the chromogen. The section was then counterstained with haematoxylin and mounted with DPX.

**STORAGE**

Store at 4°C short term. For long term storage, store at -20°C, avoiding freeze/thaw cycles.

**NOTE**

For Research Use Only. Not for diagnostic, therapeutics, prophylactic or in vivo use.