

DATASHEET

ALDH9A1 Rabbit Polyclonal Antibody

CAT. NO. APA13174

KEY FEATURES

Target	ALDH9A1	Source / Host	Rabbit
Reactivity	Human, Mouse, Rat	Clonality	Polyclonal
Applications	WB	Conjugation	Unconjugated
Form / Buffer	Liquid in 0.42% Potassium phosphate, 0.87% Sodium chloride, pH 7.3, 30% glycerol, and 0.01% sodium azide.		Storage at -20°C

BACKGROUND

Converts gamma-trimethylaminobutyraldehyde into gamma-butyrobetaine with high efficiency (in vitro). Can catalyze the irreversible oxidation of a broad range of aldehydes to the corresponding acids in an NAD-dependent reaction, but with low efficiency. Catalyzes the oxidation of aldehydes arising from biogenic amines and polyamines.

APPLICATION

To ensure optimal assay performance, AREX recommends conducting reagent titration tailored to each testing system for optimal detection results.

WB	1:500 - 1:1000
----	----------------

*Results are sample-specific. Please refer to your local assay conditions and test parameters for reference.

PRODUCT OVERVIEW

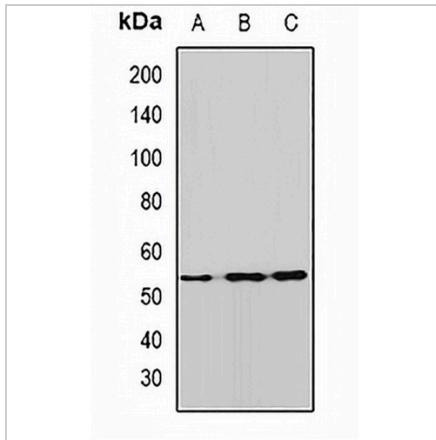
Description	Rabbit polyclonal antibody to ALDH9A1
Specificity	Recognizes endogenous levels of ALDH9A1 protein.
Antibody Type	Primary antibody
Immunogen	KLH-conjugated synthetic peptide of human ALDH9A1
Purification	The antibody was purified by immunogen affinity chromatography.
Molecular Weight	Predicted: 46; Observed: 54 kD
Form/Buffer	Liquid in 0.42% Potassium phosphate, 0.87% Sodium chloride, pH 7.3, 30% glycerol, and 0.01% sodium azide.
Alternative Names	ALDH4; ALDH7; ALDH9; 4-trimethylaminobutyraldehyde dehydrogenase; TMABADH; Aldehyde dehydrogenase E3 isozyme; Aldehyde dehydrogenase family 9 member A1; Gamma-aminobutyraldehyde dehydrogenase; R-aminobutyraldehyde dehydrogenase
Gene Symbol	ALDH9A1
Entrez Gene	223(Human); 56752(Mouse); 64040(Rat)
SwissProt	P49189(Human); Q9JLJ2(Mouse); Q9JLJ3(Rat)

*AREX continuously optimizes our products. Webpage content may not reflect the latest updates. For inquiries, please contact info@arexbio.com or your local distributor.

*Clone Number, Reactivity, Source/Host and Clonality can be found in the product name and Key Features section above.

DATASHEET**ALDH9A1 Rabbit Polyclonal Antibody**

CAT. NO. APA13174

DATA

Western blot analysis of ALDH9A1 expression in Hela (A), mouse liver (B), rat kidney (C) whole cell lysates. (Predicted band size: 46; 53 kD; Observed band size: 54 kD)

STORAGE

Store at 4°C short term. For long term storage, store at -20°C, avoiding freeze/thaw cycles.

NOTE

For Research Use Only. Not for diagnostic, therapeutics, prophylactic or in vivo use.