

DATASHEET

MP19 Rabbit Polyclonal Antibody

CAT. NO. APA13179

KEY FEATURES

Target	MP19	Source / Host	Rabbit
Reactivity	Human, Mouse, Rat	Clonality	Polyclonal
Applications	WB	Conjugation	Unconjugated
Form / Buffer	Liquid in 0.42% Potassium phosphate, 0.87% Sodium chloride, pH 7.3, 30% glycerol, and 0.01% sodium azide.		Storage at -20°C

BACKGROUND

Present in the thicker 16-17 nm junctions of mammalian lens fiber cells, where it may contribute to cell junctional organization. Acts as a receptor for calmodulin. May play an important role in both lens development and cataractogenesis.

APPLICATION

To ensure optimal assay performance, AREX recommends conducting reagent titration tailored to each testing system for optimal detection results.

WB	1:500 - 1:2000
----	----------------

*Results are sample-specific. Please refer to your local assay conditions and test parameters for reference.

PRODUCT OVERVIEW

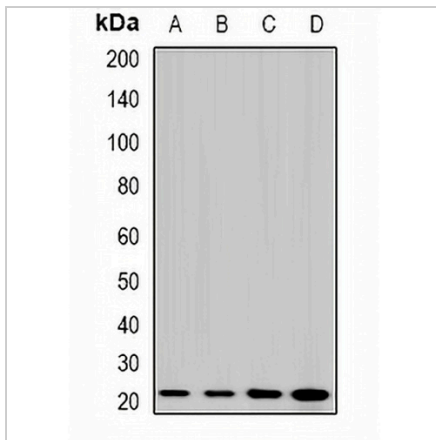
Description	Rabbit polyclonal antibody to MP19
Specificity	Recognizes endogenous levels of MP19 protein.
Antibody Type	Primary antibody
Immunogen	Recombinant fusion protein of human MP19
Purification	The antibody was purified by immunogen affinity chromatography.
Molecular Weight	Predicted: 19; Observed: 20 kD
Form/Buffer	Liquid in 0.42% Potassium phosphate, 0.87% Sodium chloride, pH 7.3, 30% glycerol, and 0.01% sodium azide.
Alternative Names	Lens fiber membrane intrinsic protein; MP18; MP19; MP20
Gene Symbol	LIM2
Entrez Gene	3982(Human)
SwissProt	P55344(Human)

*AREX continuously optimizes our products. Webpage content may not reflect the latest updates. For inquiries, please contact info@arexbio.com or your local distributor.

*Clone Number, Reactivity, Source/Host and Clonality can be found in the product name and Key Features section above.

DATASHEET**MP19 Rabbit Polyclonal Antibody**

CAT. NO. APA13179

DATA

Western blot analysis of MP19 expression in HepG2 (A), Jurkat (B), mouse eye (C), rat liver (D) whole cell lysates. (Predicted band size: 19; 24 kD; Observed band size: 20 kD)

STORAGE

Store at 4°C short term. For long term storage, store at -20°C, avoiding freeze/thaw cycles.

NOTE

For Research Use Only. Not for diagnostic, therapeutics, prophylactic or in vivo use.