

DATASHEET

Caprin1 Rabbit Polyclonal Antibody

CAT. NO. APA13180

KEY FEATURES

Target	Caprin1	Source / Host	Rabbit
Reactivity	Human, Mouse, Rat	Clonality	Polyclonal
Applications	WB, IF/ICC	Conjugation	Unconjugated
Form / Buffer	Liquid in 0.42% Potassium phosphate, 0.87% Sodium chloride, pH 7.3, 30% glycerol, and 0.01% sodium azide.		Storage at-20°C

BACKGROUND

mRNA-binding protein that acts as a regulator of mRNAs transport, translation and/or stability, and which is involved in neurogenesis, synaptic plasticity in neurons and cell proliferation and migration in multiple cell types . Plays an essential role in cytoplasmic stress granule formation . Acts as an mRNA regulator by mediating formation of some phase-separated membraneless compartment: undergoes liquid-liquid phase separation upon binding to target mRNAs, leading to assemble mRNAs into cytoplasmic ribonucleoprotein granules that concentrate mRNAs with associated regulatory factors .

APPLICATION

To ensure optimal assay performance, AREX recommends conducting reagent titration tailored to each testing system for optimal detection results.

WB	1:500 - 1:1000
IF/ICC	1:50 - 1:200

*Results are sample-specific. Please refer to your local assay conditions and test parameters for reference.

PRODUCT OVERVIEW

Description	Rabbit polyclonal antibody to Caprin1
Specificity	Recognizes endogenous levels of Caprin1 protein.
Antibody Type	Primary antibody
Immunogen	Recombinant fusion protein of human Caprin1
Purification	The antibody was purified by immunogen affinity chromatography.
Molecular Weight	Predicted: 76; Observed: 120 kD
Form/Buffer	Liquid in 0.42% Potassium phosphate, 0.87% Sodium chloride, pH 7.3, 30% glycerol, and 0.01% sodium azide.
Alternative Names	GPIAP1; GPIP137; M11S1; RNG105; Caprin-1; Cell cycle-associated protein 1; Cytoplasmic activation- and proliferation-associated protein 1; GPI-anchored membrane protein 1; GPI-anchored protein p137; GPI-p137; p137GPI; Membrane component chromosome 11 surface marker 1; RNA granule protein 105
Gene Symbol	CAPRIN1
Entrez Gene	4076(Human); 53872(Mouse); 362173(Rat)
SwissProt	Q14444(Human); Q60865(Mouse); Q5M9G3(Rat)

*AREX continuously optimizes our products. Webpage content may not reflect the latest updates. For inquiries, please contact info@arexbio.com or your local distributor.

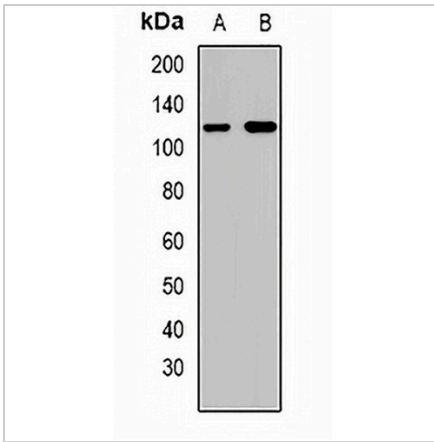
*Clone Number, Reactivity, Source/Host and Clonality can be found in the product name and Key Features section above.

DATASHEET

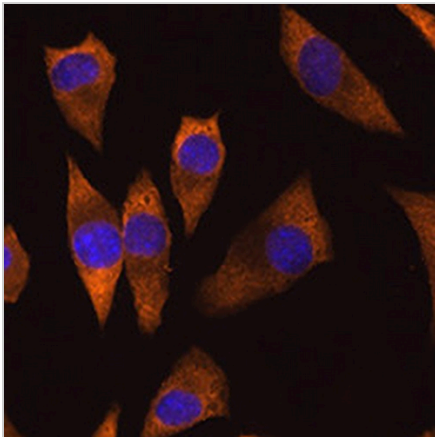
Caprin1 Rabbit Polyclonal Antibody

CAT. NO. APA13180

DATA



Western blot analysis of Caprin1 expression in HeLa (A), Jurkat (B) whole cell lysates. (Predicted band size: 76; 78 kD; Observed band size: 120 kD)



Immunofluorescent analysis of Caprin1 staining in L929 cells. Formalin-fixed cells were permeabilized with 0.1% Triton X-100 in TBS for 5-10 minutes and blocked with 3% BSA-PBS for 30 minutes at room temperature. Cells were probed with the primary antibody in 3% BSA-PBS and incubated overnight at 4 °C in a humidified chamber. Cells were washed with PBST and incubated with a AREX® Fluor 594-conjugated secondary antibody (red) in PBS at room temperature in the dark. DAPI was used to stain the cell nuclei (blue).

STORAGE

Store at 4°C short term. For long term storage, store at -20°C, avoiding freeze/thaw cycles.

NOTE

For Research Use Only. Not for diagnostic, therapeutics, prophylactic or in vivo use.