

DATASHEET

Metaxin-1 Rabbit Polyclonal Antibody

CAT. NO. APA13181

KEY FEATURES

Target	Metaxin-1	Source / Host	Rabbit
Reactivity	Human, Mouse, Rat	Clonality	Polyclonal
Applications	WB, IF/ICC	Conjugation	Unconjugated
Form / Buffer	Liquid in 0.42% Potassium phosphate, 0.87% Sodium chloride, pH 7.3, 30% glycerol, and 0.01% sodium azide.		Storage at -20°C

BACKGROUND

Involved in transport of proteins into the mitochondrion. Essential for embryonic development .

APPLICATION

To ensure optimal assay performance, AREX recommends conducting reagent titration tailored to each testing system for optimal detection results.

WB	1:500 - 1:1000
IF/ICC	1:50 - 1:200

*Results are sample-specific. Please refer to your local assay conditions and test parameters for reference.

PRODUCT OVERVIEW

Description	Rabbit polyclonal antibody to Metaxin-1
Specificity	Recognizes endogenous levels of Metaxin-1 protein.
Antibody Type	Primary antibody
Immunogen	Recombinant fusion protein of human Metaxin-1
Purification	The antibody was purified by immunogen affinity chromatography.
Molecular Weight	Predicted: 35; Observed: 35 kD
Form/Buffer	Liquid in 0.42% Potassium phosphate, 0.87% Sodium chloride, pH 7.3, 30% glycerol, and 0.01% sodium azide.
Alternative Names	MTX; MTXN; Metaxin-1; Mitochondrial outer membrane import complex protein 1
Gene Symbol	MTX1
Entrez Gene	4580(Human)
SwissProt	Q13505(Human); P47802(Mouse)

*AREX continuously optimizes our products. Webpage content may not reflect the latest updates. For inquiries, please contact info@arexbio.com or your local distributor.

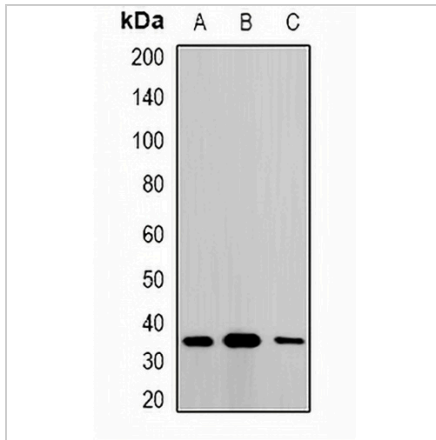
*Clone Number, Reactivity, Source/Host and Clonality can be found in the product name and Key Features section above.

DATASHEET

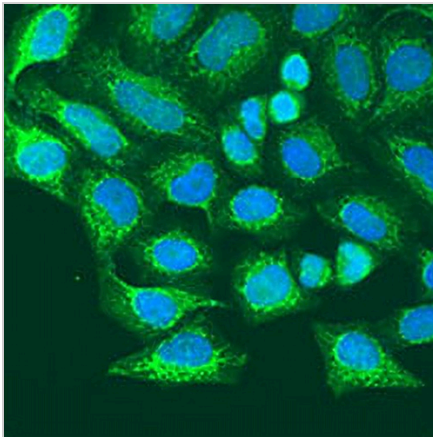
Metaxin-1 Rabbit Polyclonal Antibody

CAT. NO. APA13181

DATA



Western blot analysis of Metaxin-1 expression in A549 (A), SKOV3 (B), mouse liver (C) whole cell lysates. (Predicted band size: 35; 48; 51 kD; Observed band size: 35 kD)



Immunofluorescent analysis of Metaxin-1 staining in U2OS cells. Formalin-fixed cells were permeabilized with 0.1% Triton X-100 in TBS for 5-10 minutes and blocked with 3% BSA-PBS for 30 minutes at room temperature. Cells were probed with the primary antibody in 3% BSA-PBS and incubated overnight at 4 °C in a humidified chamber. Cells were washed with PBST and incubated with a AREX® Fluor 488 -conjugated secondary antibody (green) in PBS at room temperature in the dark. DAPI was used to stain the cell nuclei (blue).

STORAGE

Store at 4°C short term. For long term storage, store at -20°C, avoiding freeze/thaw cycles.

NOTE

For Research Use Only. Not for diagnostic, therapeutics, prophylactic or in vivo use.