

DATASHEET

LLH Rabbit Polyclonal Antibody

CAT. NO. APA13183

KEY FEATURES

Target	LLH	Source / Host	Rabbit
Reactivity	Human, Mouse, Rat	Clonality	Polyclonal
Applications	WB	Conjugation	Unconjugated
Form / Buffer	Liquid in 0.42% Potassium phosphate, 0.87% Sodium chloride, pH 7.3, 30% glycerol, and 0.01% sodium azide.		Storage at -20°C

BACKGROUND

Part of a complex composed of PLOD1, P3H3 and P3H4 that catalyzes hydroxylation of lysine residues in collagen alpha chains and is required for normal assembly and cross-linking of collagen fibrils. Forms hydroxylysine residues in -Xaa-Lys-Gly-sequences in collagens. These hydroxylysines serve as sites of attachment for carbohydrate units and are essential for the stability of the intermolecular collagen cross-links (Probable).

APPLICATION

To ensure optimal assay performance, AREX recommends conducting reagent titration tailored to each testing system for optimal detection results.

WB	1:500 - 1:1000
----	----------------

*Results are sample-specific. Please refer to your local assay conditions and test parameters for reference.

PRODUCT OVERVIEW

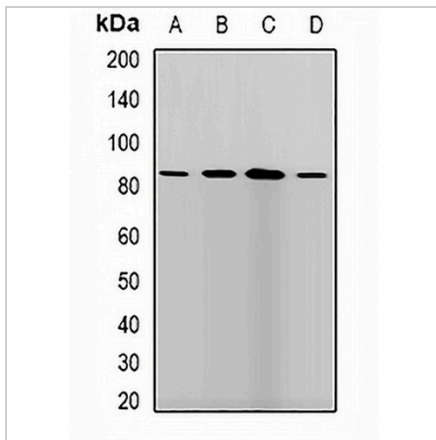
Description	Rabbit polyclonal antibody to LLH
Specificity	Recognizes endogenous levels of LLH protein.
Antibody Type	Primary antibody
Immunogen	Recombinant fusion protein of human LLH
Purification	The antibody was purified by immunogen affinity chromatography.
Molecular Weight	Predicted: 83; Observed: 84 kD
Form/Buffer	Liquid in 0.42% Potassium phosphate, 0.87% Sodium chloride, pH 7.3, 30% glycerol, and 0.01% sodium azide.
Alternative Names	LLH; PLOD; Procollagen-lysine,2-oxoglutarate 5-dioxygenase 1; Lysyl hydroxylase 1; LH1
Gene Symbol	PLOD1
Entrez Gene	5351(Human); 18822(Mouse)
SwissProt	Q02809(Human); Q9R0E2(Mouse)

*AREX continuously optimizes our products. Webpage content may not reflect the latest updates. For inquiries, please contact info@arexbio.com or your local distributor.

*Clone Number, Reactivity, Source/Host and Clonality can be found in the product name and Key Features section above.

DATASHEET**LLH Rabbit Polyclonal Antibody**

CAT. NO. APA13183

DATA

Western blot analysis of LLH expression in SKOV3 (A), HepG2 (B), mouse brain (C), mouse liver (D) whole cell lysates. (Predicted band size: 83; 88 kD; Observed band size: 84 kD)

STORAGE

Store at 4°C short term. For long term storage, store at -20°C, avoiding freeze/thaw cycles.

NOTE

For Research Use Only. Not for diagnostic, therapeutics, prophylactic or in vivo use.