

DATASHEET

NSD2 Rabbit Polyclonal Antibody

CAT. NO. APA13188

KEY FEATURES

Target	NSD2	Source / Host	Rabbit
Reactivity	Human, Mouse	Clonality	Polyclonal
Applications	WB, IHC	Conjugation	Unconjugated
Form / Buffer	Liquid in 0.42% Potassium phosphate, 0.87% Sodium chloride, pH 7.3, 30% glycerol, and 0.01% sodium azide.		Storage at -20°C

BACKGROUND

Histone methyltransferase which specifically dimethylates nucleosomal histone H3 at 'Lys-36' (H3K36me2) . Also monomethylates nucleosomal histone H3 at 'Lys-36' (H3K36me) in vitro . Does not trimethylate nucleosomal histone H3 at 'Lys-36' (H3K36me3) . However, specifically trimethylates histone H3 at 'Lys-36' (H3K36me3) at euchromatic regions in embryonic stem (ES) cells . By methylating histone H3 at 'Lys-36', involved in the regulation of gene transcription during various biological processes . In ES cells, associates with developmental transcription factors such as SALL1 and represses inappropriate gene transcription mediated by histone deacetylation . During heart development, associates with transcription factor NKX2-5 to repress transcription of NKX2-5 target genes .

APPLICATION

To ensure optimal assay performance, AREX recommends conducting reagent titration tailored to each testing system for optimal detection results.

WB	1:500 - 1:2000
IHC	1:50 - 1:200

*Results are sample-specific. Please refer to your local assay conditions and test parameters for reference.

PRODUCT OVERVIEW

Description	Rabbit polyclonal antibody to NSD2
Specificity	Recognizes endogenous levels of NSD2 protein.
Antibody Type	Primary antibody
Immunogen	Recombinant fusion protein of human NSD2
Purification	The antibody was purified by immunogen affinity chromatography.
Molecular Weight	Predicted: 30; Observed: 80; 152 kD
Form/Buffer	Liquid in 0.42% Potassium phosphate, 0.87% Sodium chloride, pH 7.3, 30% glycerol, and 0.01% sodium azide.
Alternative Names	KIAA1090; MMSET; NSD2; TRX5; Histone-lysine N-methyltransferase NSD2; Multiple myeloma SET domain-containing protein; MMSET; Nuclear SET domain-containing protein 2; NSD2; Protein trithorax-5; Wolf-Hirschhorn syndrome candidate 1 protein; WHSC1
Gene Symbol	WHSC1
Entrez Gene	7468(Human); 107823(Mouse)
SwissProt	O96028(Human); Q8BVE8(Mouse)

*AREX continuously optimizes our products. Webpage content may not reflect the latest updates. For inquiries, please contact info@arexbio.com or your local distributor.

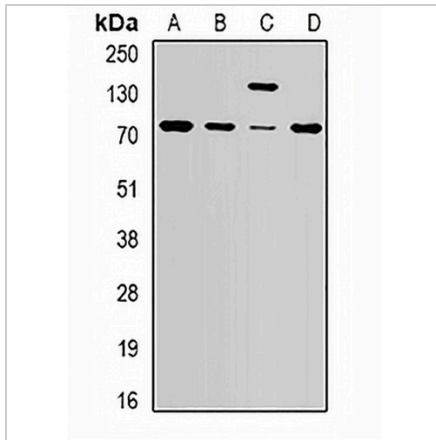
*Clone Number, Reactivity, Source/Host and Clonality can be found in the product name and Key Features section above.

DATASHEET

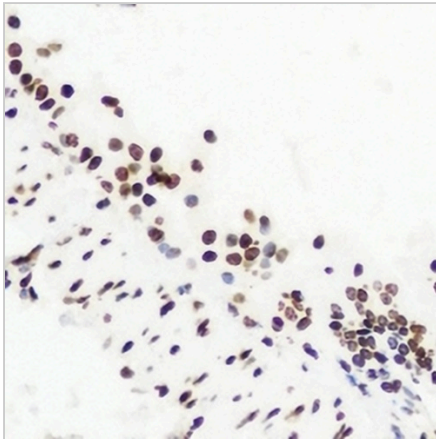
NSD2 Rabbit Polyclonal Antibody

CAT. NO. APA13188

DATA



Western blot analysis of NSD2 expression in HepG2 (A), SW620 (B), mouse brain (C), mouse spleen (D) whole cell lysates. (Predicted band size: 30; 53; 66; 69; 71; 80; 152 kD; Observed band size: 80; 152 kD)



Immunohistochemical analysis of NSD2 staining in mouse lung formalin fixed paraffin embedded tissue section. The section was pre-treated using heat mediated antigen retrieval with sodium citrate buffer (pH 6.0). The section was then incubated with the antibody at room temperature and detected using an HRP conjugated compact polymer system. DAB was used as the chromogen. The section was then counterstained with haematoxylin and mounted with DPX.

STORAGE

Store at 4°C short term. For long term storage, store at -20°C, avoiding freeze/thaw cycles.

NOTE

For Research Use Only. Not for diagnostic, therapeutics, prophylactic or in vivo use.