

DATASHEET

SSNA1 Rabbit Polyclonal Antibody

CAT. NO. APA13190

KEY FEATURES

Target	SSNA1	Source / Host	Rabbit
Reactivity	Human, Mouse, Rat	Clonality	Polyclonal
Applications	WB, IHC, IF/ICC	Conjugation	Unconjugated
Form / Buffer	Liquid in 0.42% Potassium phosphate, 0.87% Sodium chloride, pH 7.3, 30% glycerol, and 0.01% sodium azide.		Storage at -20°C

BACKGROUND

Microtubule-binding protein which stabilizes dynamic microtubules by slowing growth and shrinkage at both plus and minus ends and serves as a sensor of microtubule damage, protecting microtubules from the microtubule-severing enzyme SPAST . Induces microtubule branching which is mediated by the formation of long SSNA1 fibrils which guide microtubule protofilaments to split apart from the mother microtubule and form daughter microtubules . Plays a role in axon outgrowth and branching . Required for cell division .

APPLICATION

To ensure optimal assay performance, AREX recommends conducting reagent titration tailored to each testing system for optimal detection results.

WB	1:500 - 1:2000
IHC	1:50 - 1:200
IF/ICC	1:50 - 1:200

*Results are sample-specific. Please refer to your local assay conditions and test parameters for reference.

PRODUCT OVERVIEW

Description	Rabbit polyclonal antibody to SSNA1
Specificity	Recognizes endogenous levels of SSNA1 protein.
Antibody Type	Primary antibody
Immunogen	Recombinant fusion protein of human SSNA1
Purification	The antibody was purified by immunogen affinity chromatography.
Molecular Weight	Predicted: 13 kD; Observed: 13 kD
Form/Buffer	Liquid in 0.42% Potassium phosphate, 0.87% Sodium chloride, pH 7.3, 30% glycerol, and 0.01% sodium azide.
Alternative Names	NA14; Sjogren syndrome nuclear autoantigen 1; Nuclear autoantigen of 14 kDa
Gene Symbol	SSNA1
Entrez Gene	8636(Human); 68475(Mouse)
SwissProt	O43805(Human); Q9JJ94(Mouse)

*AREX continuously optimizes our products. Webpage content may not reflect the latest updates. For inquiries, please contact info@arexbio.com or your local distributor.

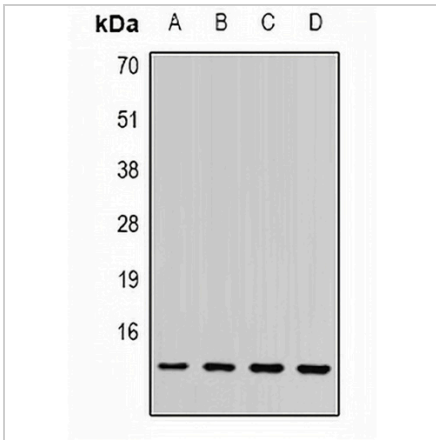
*Clone Number, Reactivity, Source/Host and Clonality can be found in the product name and Key Features section above.

DATASHEET

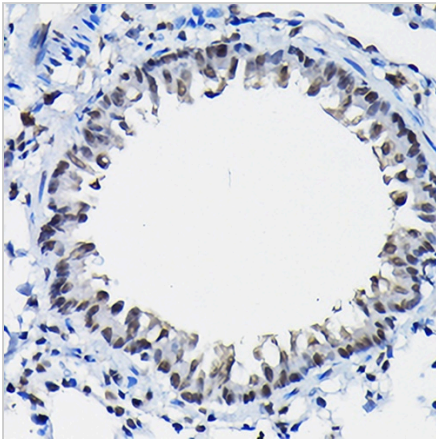
SSNA1 Rabbit Polyclonal Antibody

CAT. NO. APA13190

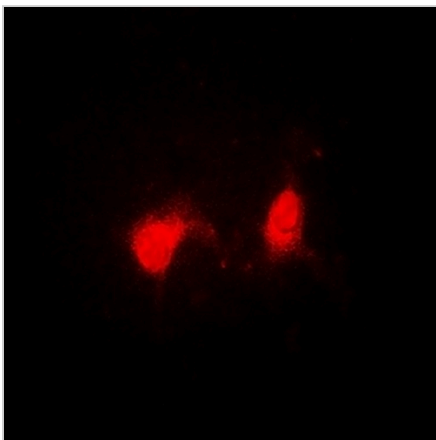
DATA



Western blot analysis of SSNA1 expression in PC3 (A), MCF7 (B), mouse spleen (C), rat brain (D) whole cell lysates. (Predicted band size: 13 kD; Observed band size: 13 kD)



Immunohistochemical analysis of SSNA1 staining in rat lung formalin fixed paraffin embedded tissue section. The section was pre-treated using heat mediated antigen retrieval with sodium citrate buffer (pH 6.0). The section was then incubated with the antibody at room temperature and detected using an HRP conjugated compact polymer system. DAB was used as the chromogen. The section was then counterstained with haematoxylin and mounted with DPX.



Immunofluorescent analysis of SSNA1 staining in A549 cells. Formalin-fixed cells were permeabilized with 0.1% Triton X-100 in TBS for 5-10 minutes and blocked with 3% BSA-PBS for 30 minutes at room temperature. Cells were probed with the primary antibody in 3% BSA-PBS and incubated overnight at 4 °C in a hidified chamber. Cells were washed with PBST and incubated with a DyLight 594-conjugated secondary antibody (red) in PBS at room temperature in the dark.

STORAGE

Store at 4°C short term. For long term storage, store at -20°C, avoiding freeze/thaw cycles.

NOTE

For Research Use Only. Not for diagnostic, therapeutics, prophylactic or in vivo use.