

DATASHEET

SNAP-alpha Rabbit Polyclonal Antibody

CAT. NO. APA13191

KEY FEATURES

Target	SNAP-alpha	Source / Host	Rabbit
Reactivity	Human, Mouse, Rat	Clonality	Polyclonal
Applications	WB, IHC	Conjugation	Unconjugated
Form / Buffer	Liquid in 0.42% Potassium phosphate, 0.87% Sodium chloride, pH 7.3, 30% glycerol, and 0.01% sodium azide.		Storage at-20°C

BACKGROUND

Required for vesicular transport between the endoplasmic reticulum and the Golgi apparatus (Probable). Together with GNA12 promotes CDH5 localization to plasma membrane . Together with GNA12 promotes CDH5 localization to plasma membrane .

APPLICATION

To ensure optimal assay performance, AREX recommends conducting reagent titration tailored to each testing system for optimal detection results.

WB	1:500 - 1:2000
IHC	1:50 - 1:200

*Results are sample-specific. Please refer to your local assay conditions and test parameters for reference.

PRODUCT OVERVIEW

Description	Rabbit polyclonal antibody to SNAP-alpha
Specificity	Recognizes endogenous levels of SNAP-alpha protein.
Antibody Type	Primary antibody
Immunogen	Recombinant fusion protein of human SNAP-alpha
Purification	The antibody was purified by immunogen affinity chromatography.
Molecular Weight	Predicted: 33 kD; Observed: 33 kD
Form/Buffer	Liquid in 0.42% Potassium phosphate, 0.87% Sodium chloride, pH 7.3, 30% glycerol, and 0.01% sodium azide.
Alternative Names	SNAPA; Alpha-soluble NSF attachment protein; SNAP-alpha; N-ethylmaleimide-sensitive factor attachment protein alpha
Gene Symbol	NAPA
Entrez Gene	8775(Human); 108124(Mouse); 140673(Rat)
SwissProt	P54920(Human); Q9DB05(Mouse); P54921(Rat)

*AREX continuously optimizes our products. Webpage content may not reflect the latest updates. For inquiries, please contact info@arexbio.com or your local distributor.

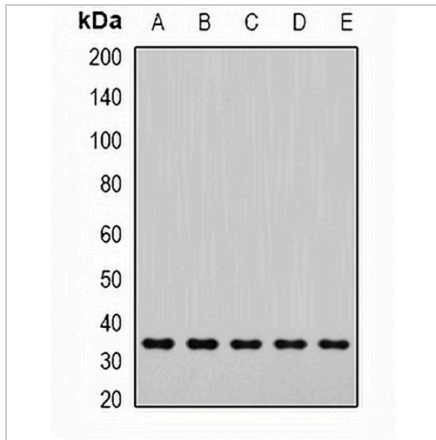
*Clone Number, Reactivity, Source/Host and Clonality can be found in the product name and Key Features section above.

DATASHEET

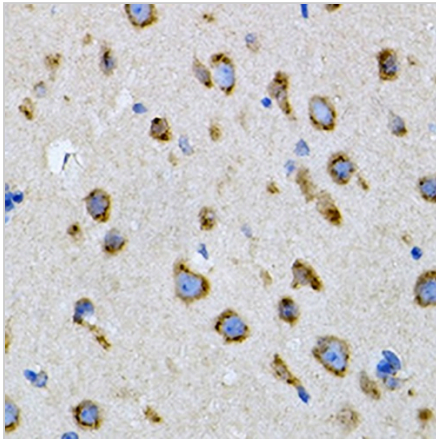
SNAP-alpha Rabbit Polyclonal Antibody

CAT. NO. APA13191

DATA



Western blot analysis of SNAP-alpha expression in Hela (A), Jurkat (B), mouse brain (C), mouse lung (D), rat liver (E) whole cell lysates. (Predicted band size: 33 kD; Observed band size: 33 kD)



Immunohistochemical analysis of SNAP-alpha staining in mouse brain formalin fixed paraffin embedded tissue section. The section was pre-treated using heat mediated antigen retrieval with sodium citrate buffer (pH 6.0). The section was then incubated with the antibody at room temperature and detected using an HRP conjugated compact polymer system. DAB was used as the chromogen. The section was then counterstained with haematoxylin and mounted with DPX.

STORAGE

Store at 4°C short term. For long term storage, store at -20°C, avoiding freeze/thaw cycles.

NOTE

For Research Use Only. Not for diagnostic, therapeutics, prophylactic or in vivo use.