

DATASHEET

KDM4A Rabbit Polyclonal Antibody

CAT. NO. APA13193

KEY FEATURES

Target	KDM4A	Source / Host	Rabbit
Reactivity	Human, Mouse, Rat	Clonality	Polyclonal
Applications	WB, IHC	Conjugation	Unconjugated
Form / Buffer	Liquid in 0.42% Potassium phosphate, 0.87% Sodium chloride, pH 7.3, 30% glycerol, and 0.01% sodium azide.		Storage at -20°C

BACKGROUND

Histone demethylase that specifically demethylates 'Lys-9' and 'Lys-36' residues of histone H3, thereby playing a central role in histone code . Does not demethylate histone H3 'Lys-4', H3 'Lys-27' nor H4 'Lys-20' . Demethylates trimethylated H3 'Lys-9' and H3 'Lys-36' residue, while it has no activity on mono- and dimethylated residues . Demethylation of Lys residue generates formaldehyde and succinate . Also able to demethylate histone H1-4 methylated at 'Lys-26' (H1.4K26me1, H1.4K26me2 and H1.4K26me3) . Participates in transcriptional repression of ASCL2 and E2F-responsive promoters via the recruitment of histone deacetylases and NCOR1, respectively .

APPLICATION

To ensure optimal assay performance, AREX recommends conducting reagent titration tailored to each testing system for optimal detection results.

WB	1:500 - 1:2000
IHC	1:50 - 1:200

*Results are sample-specific. Please refer to your local assay conditions and test parameters for reference.

PRODUCT OVERVIEW

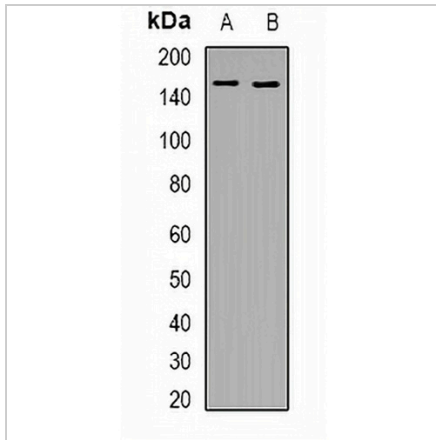
Description	Rabbit polyclonal antibody to KDM4A
Specificity	Recognizes endogenous levels of KDM4A protein.
Antibody Type	Primary antibody
Immunogen	Recombinant fusion protein of human KDM4A
Purification	The antibody was purified by immunogen affinity chromatography.
Molecular Weight	Predicted: 54; Observed: 150 kD
Form/Buffer	Liquid in 0.42% Potassium phosphate, 0.87% Sodium chloride, pH 7.3, 30% glycerol, and 0.01% sodium azide.
Alternative Names	JHDM3A; JMJD2; JMJD2A; KIAA0677; Lysine-specific demethylase 4A; JmjC domain-containing histone demethylation protein 3A; Jumonji domain-containing protein 2A
Gene Symbol	KDM4A
Entrez Gene	9682(Human); 230674(Mouse)
SwissProt	O75164(Human); Q8BW72(Mouse)

*AREX continuously optimizes our products. Webpage content may not reflect the latest updates. For inquiries, please contact info@arexbio.com or your local distributor.

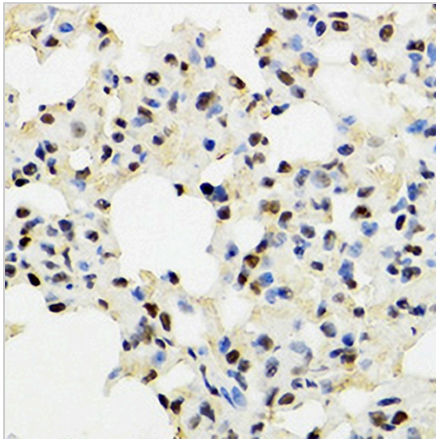
*Clone Number, Reactivity, Source/Host and Clonality can be found in the product name and Key Features section above.

DATASHEET**KDM4A Rabbit Polyclonal Antibody**

CAT. NO. APA13193

DATA

Western blot analysis of KDM4A expression in THP1 (A), mouse thymus (B) whole cell lysates. (Predicted band size: 54; 120 kD; Observed band size: 150 kD)



Immunohistochemical analysis of KDM4A staining in mouse lung formalin fixed paraffin embedded tissue section. The section was pre-treated using heat mediated antigen retrieval with sodium citrate buffer (pH 6.0). The section was then incubated with the antibody at room temperature and detected using an HRP conjugated compact polymer system. DAB was used as the chromogen. The section was then counterstained with haematoxylin and mounted with DPX.

STORAGE

Store at 4°C short term. For long term storage, store at -20°C, avoiding freeze/thaw cycles.

NOTE

For Research Use Only. Not for diagnostic, therapeutics, prophylactic or in vivo use.