

**DATASHEET**

**ERP29 Rabbit Polyclonal Antibody**

CAT. NO. APA13196

**KEY FEATURES**

Target	ERP29	Source / Host	Rabbit
Reactivity	Human, Mouse, Rat	Clonality	Polyclonal
Applications	WB	Conjugation	Unconjugated
Form / Buffer	Liquid in 0.42% Potassium phosphate, 0.87% Sodium chloride, pH 7.3, 30% glycerol, and 0.01% sodium azide.		Storage at -20°C

**BACKGROUND**

Does not seem to be a disulfide isomerase. Plays an important role in the processing of secretory proteins within the endoplasmic reticulum (ER), possibly by participating in the folding of proteins in the ER.

**APPLICATION**

To ensure optimal assay performance, AREX recommends conducting reagent titration tailored to each testing system for optimal detection results.

WB	1:500 - 1:2000
----	----------------

\*Results are sample-specific. Please refer to your local assay conditions and test parameters for reference.

**PRODUCT OVERVIEW**

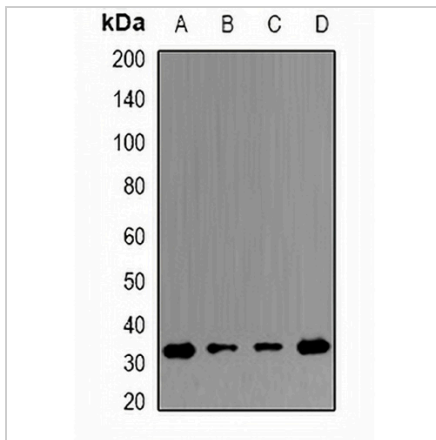
Description	Rabbit polyclonal antibody to ERP29
Specificity	Recognizes endogenous levels of ERP29 protein.
Antibody Type	Primary antibody
Immunogen	KLH-conjugated synthetic peptide of human ERP29
Purification	The antibody was purified by immunogen affinity chromatography.
Molecular Weight	Predicted: 5; Observed: 29 kD
Form/Buffer	Liquid in 0.42% Potassium phosphate, 0.87% Sodium chloride, pH 7.3, 30% glycerol, and 0.01% sodium azide.
Alternative Names	C12orf8; ERP28; Endoplasmic reticulum resident protein 29; ERp29; Endoplasmic reticulum resident protein 28; ERp28; Endoplasmic reticulum resident protein 31; ERp31
Gene Symbol	ERP29
Entrez Gene	10961(Human); 67397(Mouse); 117030(Rat)
SwissProt	P30040(Human); P57759(Mouse); P52555(Rat)

\*AREX continuously optimizes our products. Webpage content may not reflect the latest updates. For inquiries, please contact [info@arexbio.com](mailto:info@arexbio.com) or your local distributor.

\*Clone Number, Reactivity, Source/Host and Clonality can be found in the product name and Key Features section above.

**DATASHEET****ERP29 Rabbit Polyclonal Antibody**

CAT. NO. APA13196

**DATA**

Western blot analysis of ERP29 expression in THP1 (A), HeLa (B), mouse testis (C), mouse spleen (D) whole cell lysates. (Predicted band size: 5; 28 kD; Observed band size: 29 kD)

**STORAGE**

Store at 4°C short term. For long term storage, store at -20°C, avoiding freeze/thaw cycles.

**NOTE**

For Research Use Only. Not for diagnostic, therapeutics, prophylactic or in vivo use.