

DATASHEET

MTHFD1L Rabbit Polyclonal Antibody

CAT. NO. APA13198

KEY FEATURES

Target	MTHFD1L	Source / Host	Rabbit
Reactivity	Human, Mouse, Rat	Clonality	Polyclonal
Applications	WB, IHC	Conjugation	Unconjugated
Form / Buffer	Liquid in 0.42% Potassium phosphate, 0.87% Sodium chloride, pH 7.3, 30% glycerol, and 0.01% sodium azide.		Storage at -20°C

BACKGROUND

May provide the missing metabolic reaction required to link the mitochondria and the cytoplasm in the mammalian model of one-carbon folate metabolism complementing thus the enzymatic activities of MTHFD2.

APPLICATION

To ensure optimal assay performance, AREX recommends conducting reagent titration tailored to each testing system for optimal detection results.

WB	1:500 - 1:1000
IHC	1:50 - 1:200

*Results are sample-specific. Please refer to your local assay conditions and test parameters for reference.

PRODUCT OVERVIEW

Description	Rabbit polyclonal antibody to MTHFD1L
Specificity	Recognizes endogenous levels of MTHFD1L protein.
Antibody Type	Primary antibody
Immunogen	Recombinant fusion protein of human MTHFD1L
Purification	The antibody was purified by immunogen affinity chromatography.
Molecular Weight	Predicted: 29; Observed: 106 kD
Form/Buffer	Liquid in 0.42% Potassium phosphate, 0.87% Sodium chloride, pH 7.3, 30% glycerol, and 0.01% sodium azide.
Alternative Names	FTHFSDC1; Monofunctional C1-tetrahydrofolate synthase mitochondrial; Formyltetrahydrofolate synthetase
Gene Symbol	MTHFD1L
Entrez Gene	25902(Human); 270685(Mouse)
SwissProt	Q6UB35(Human); Q3V3R1(Mouse)

*AREX continuously optimizes our products. Webpage content may not reflect the latest updates. For inquiries, please contact info@arexbio.com or your local distributor.

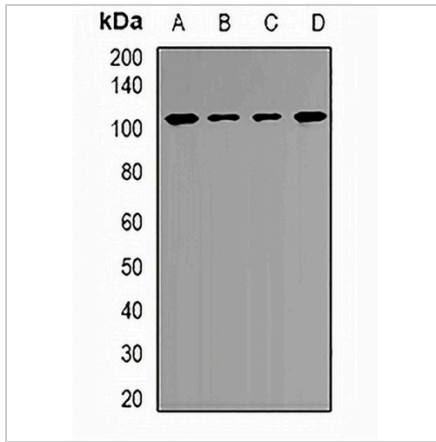
*Clone Number, Reactivity, Source/Host and Clonality can be found in the product name and Key Features section above.

DATASHEET

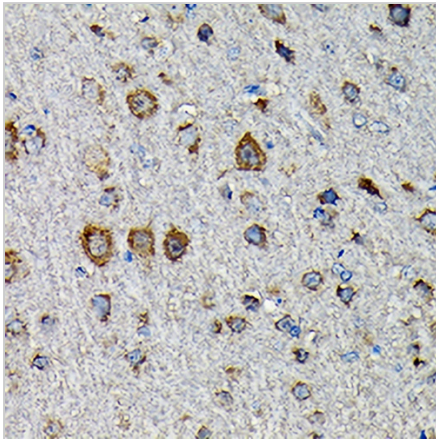
MTHFD1L Rabbit Polyclonal Antibody

CAT. NO. APA13198

DATA



Western blot analysis of MTHFD1L expression in HepG2 (A), A549 (B), mouse brain (C), rat heart (D) whole cell lysates. (Predicted band size: 29; 105 kD; Observed band size: 106 kD)



Immunohistochemical analysis of MTHFD1L staining in rat brain formalin fixed paraffin embedded tissue section. The section was pre-treated using heat mediated antigen retrieval with sodium citrate buffer (pH 6.0). The section was then incubated with the antibody at room temperature and detected using an HRP conjugated compact polymer system. DAB was used as the chromogen. The section was then counterstained with haematoxylin and mounted with DPX.

STORAGE

Store at 4°C short term. For long term storage, store at -20°C, avoiding freeze/thaw cycles.

NOTE

For Research Use Only. Not for diagnostic, therapeutics, prophylactic or in vivo use.