

DATASHEET

RUFY2 Rabbit Polyclonal Antibody

CAT. NO. APA13202

KEY FEATURES

Target	RUFY2	Source / Host	Rabbit
Reactivity	Human, Mouse, Rat	Clonality	Polyclonal
Applications	WB, IHC	Conjugation	Unconjugated
Form / Buffer	Liquid in 0.42% Potassium phosphate, 0.87% Sodium chloride, pH 7.3, 30% glycerol, and 0.01% sodium azide.		Storage at -20°C

BACKGROUND

RUN and FYVE domain-containing protein 2 (RUFY2), also known as Rab4-interacting protein related. Subunit: Interacts with BMX
Subcellular location: Nucleus Tissue specificity: Expressed in brain, lung and testis

APPLICATION

To ensure optimal assay performance, AREX recommends conducting reagent titration tailored to each testing system for optimal detection results.

WB	1:500 - 1:2000
IHC	1:50 - 1:200

*Results are sample-specific. Please refer to your local assay conditions and test parameters for reference.

PRODUCT OVERVIEW

Description	Rabbit polyclonal antibody to RUFY2
Specificity	Recognizes endogenous levels of RUFY2 protein.
Antibody Type	Primary antibody
Immunogen	Recombinant fusion protein of human RUFY2
Purification	The antibody was purified by immunogen affinity chromatography.
Molecular Weight	Predicted: 43; Observed: 75 kD
Form/Buffer	Liquid in 0.42% Potassium phosphate, 0.87% Sodium chloride, pH 7.3, 30% glycerol, and 0.01% sodium azide.
Alternative Names	KIAA1537; RABIP4R; RUN and FYVE domain-containing protein 2; Rab4-interacting protein related
Gene Symbol	RUFY2
Entrez Gene	55680(Human); 70432(Mouse)
SwissProt	Q8WXA3(Human); Q8R4C2(Mouse)

*AREX continuously optimizes our products. Webpage content may not reflect the latest updates. For inquiries, please contact info@arexbio.com or your local distributor.

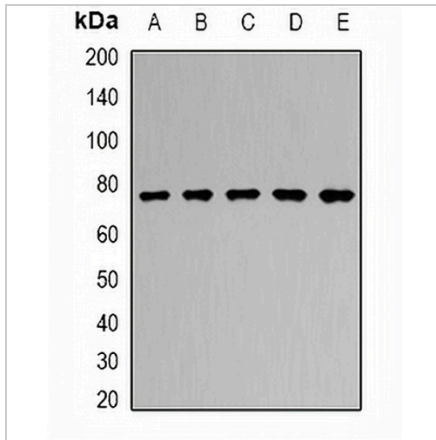
*Clone Number, Reactivity, Source/Host and Clonality can be found in the product name and Key Features section above.

DATASHEET

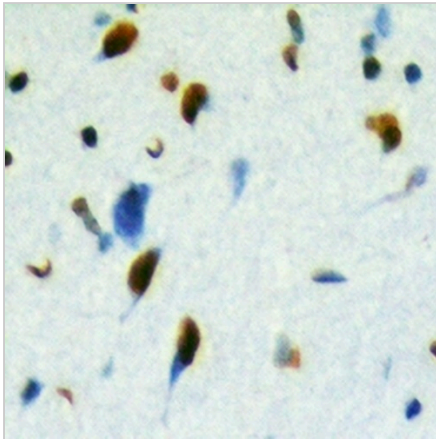
RUFY2 Rabbit Polyclonal Antibody

CAT. NO. APA13202

DATA



Western blot analysis of RUFY2 expression in SKOV3 (A), HepG2 (B), mouse spleen (C), mouse lung (D), rat brain (E) whole cell lysates. (Predicted band size: 43; 46; 70; 74; 75 kD; Observed band size: 75 kD)



Immunohistochemical analysis of RUFY2 staining in human brain formalin fixed paraffin embedded tissue section. The section was pre-treated using heat mediated antigen retrieval with sodium citrate buffer (pH 6.0). The section was then incubated with the antibody at room temperature and detected using an HRP conjugated compact polymer system. DAB was used as the chromogen. The section was then counterstained with haematoxylin and mounted with DPX.

STORAGE

Store at 4°C short term. For long term storage, store at -20°C, avoiding freeze/thaw cycles.

NOTE

For Research Use Only. Not for diagnostic, therapeutics, prophylactic or in vivo use.