

**DATASHEET**

**Neutral Ceramidase Rabbit Polyclonal Antibody**

CAT. NO. APA13203

**KEY FEATURES**

Target	Neutral Ceramidase	Source / Host	Rabbit
Reactivity	Human, Mouse, Rat	Clonality	Polyclonal
Applications	WB	Conjugation	Unconjugated
Form / Buffer	Liquid in 0.42% Potassium phosphate, 0.87% Sodium chloride, pH 7.3, 30% glycerol, and 0.01% sodium azide.		Storage at-20°C

**BACKGROUND**

Plasma membrane ceramidase that hydrolyzes sphingolipid ceramides into sphingosine and free fatty acids at neutral pH . Ceramides, sphingosine, and its phosphorylated form sphingosine-1-phosphate are bioactive lipids that mediate cellular signaling pathways regulating several biological processes including cell proliferation, apoptosis and differentiation . Also catalyzes the reverse reaction allowing the synthesis of ceramides from fatty acids and sphingosine . Together with sphingomyelinase, participates in the production of sphingosine and sphingosine-1-phosphate from the degradation of sphingomyelin, a sphingolipid enriched in the plasma membrane of cells .

**APPLICATION**

To ensure optimal assay performance, AREX recommends conducting reagent titration tailored to each testing system for optimal detection results.

WB	1:500 - 1:1000
----	----------------

\*Results are sample-specific. Please refer to your local assay conditions and test parameters for reference.

**PRODUCT OVERVIEW**

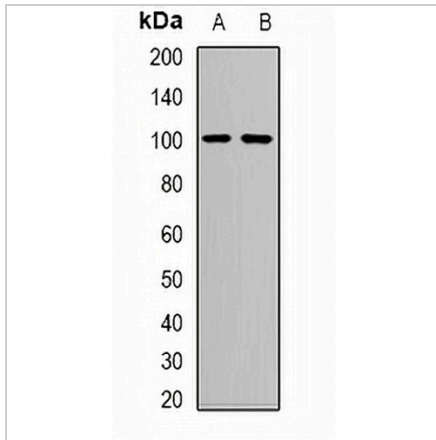
Description	Rabbit polyclonal antibody to Neutral Ceramidase
Specificity	Recognizes endogenous levels of Neutral Ceramidase protein.
Antibody Type	Primary antibody
Immunogen	Recombinant fusion protein of human Neutral Ceramidase
Purification	The antibody was purified by immunogen affinity chromatography.
Molecular Weight	Predicted: 81; Observed: 100 kD
Form/Buffer	Liquid in 0.42% Potassium phosphate, 0.87% Sodium chloride, pH 7.3, 30% glycerol, and 0.01% sodium azide.
Alternative Names	HNAC1; Neutral ceramidase; N-CDase; NCDase; Acylsphingosine deacylase 2; BCDase; LCDase; hCD; N-acylsphingosine amidohydrolase 2; Non-lysosomal ceramidase
Gene Symbol	ASAH2
Entrez Gene	56624(Human); 54447(Mouse); 114104(Rat)
SwissProt	Q9NR71(Human); Q9JHE3(Mouse); Q91XT9(Rat)

\*AREX continuously optimizes our products. Webpage content may not reflect the latest updates. For inquiries, please contact [info@arexbio.com](mailto:info@arexbio.com) or your local distributor.

\*Clone Number, Reactivity, Source/Host and Clonality can be found in the product name and Key Features section above.

**DATASHEET****Neutral Ceramidase Rabbit Polyclonal Antibody**

CAT. NO. APA13203

**DATA**

Western blot analysis of Neutral Ceramidase expression in mouse kidney (A), mouse heart (B) whole cell lysates. (Predicted band size: 81; 85 kD; Observed band size: 100 kD)

**STORAGE**

Store at 4°C short term. For long term storage, store at -20°C, avoiding freeze/thaw cycles.

**NOTE**

For Research Use Only. Not for diagnostic, therapeutics, prophylactic or in vivo use.