

DATASHEET

MCCB Rabbit Polyclonal Antibody

CAT. NO. APA13205

KEY FEATURES

Target	MCCB	Source / Host	Rabbit
Reactivity	Human, Mouse, Rat	Clonality	Polyclonal
Applications	WB, IHC	Conjugation	Unconjugated
Form / Buffer	Liquid in 0.42% Potassium phosphate, 0.87% Sodium chloride, pH 7.3, 30% glycerol, and 0.01% sodium azide.		Storage at -20°C

BACKGROUND

Carboxyltransferase subunit of the 3-methylcrotonyl-CoA carboxylase, an enzyme that catalyzes the conversion of 3-methylcrotonyl-CoA to 3-methylglutaconyl-CoA, a critical step for leucine and isovaleric acid catabolism.

APPLICATION

To ensure optimal assay performance, AREX recommends conducting reagent titration tailored to each testing system for optimal detection results.

WB	1:500 - 1:2000
IHC	1:50 - 1:200

*Results are sample-specific. Please refer to your local assay conditions and test parameters for reference.

PRODUCT OVERVIEW

Description	Rabbit polyclonal antibody to MCCB
Specificity	Recognizes endogenous levels of MCCB protein.
Antibody Type	Primary antibody
Immunogen	Recombinant fusion protein of human MCCB
Purification	The antibody was purified by immunogen affinity chromatography.
Molecular Weight	Predicted: 57; Observed: 61 kD
Form/Buffer	Liquid in 0.42% Potassium phosphate, 0.87% Sodium chloride, pH 7.3, 30% glycerol, and 0.01% sodium azide.
Alternative Names	MCCB; Methylcrotonoyl-CoA carboxylase beta chain mitochondrial; MCCase subunit beta; 3-methylcrotonyl-CoA carboxylase 2; 3-methylcrotonyl-CoA carboxylase non-biotin-containing subunit; 3-methylcrotonyl-CoA:carbon dioxide ligase subunit beta
Gene Symbol	MCCC2
Entrez Gene	64087(Human)
SwissProt	Q9HCC0(Human)

*AREX continuously optimizes our products. Webpage content may not reflect the latest updates. For inquiries, please contact info@arexbio.com or your local distributor.

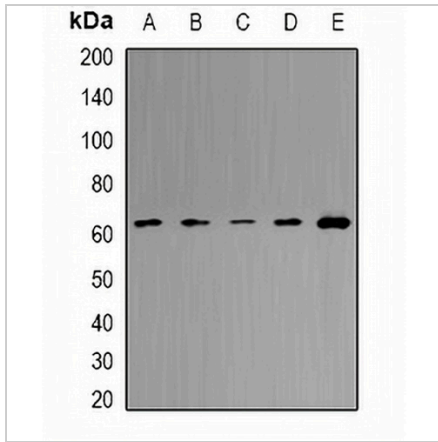
*Clone Number, Reactivity, Source/Host and Clonality can be found in the product name and Key Features section above.

DATASHEET

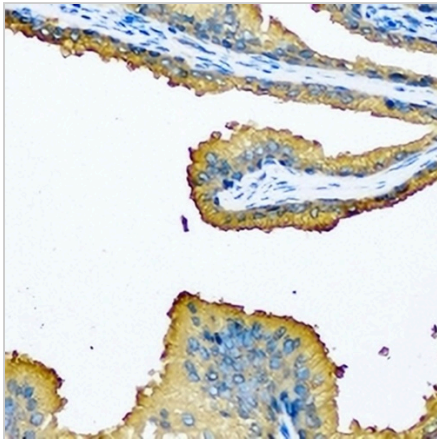
MCCB Rabbit Polyclonal Antibody

CAT. NO. APA13205

DATA



Western blot analysis of MCCB expression in Hela (A), HepG2 (B), mouse liver (C), mouse heart (D), rat brain (E) whole cell lysates. (Predicted band size: 57; 61 kD; Observed band size: 61 kD)



Immunohistochemical analysis of MCCB staining in human prostate formalin fixed paraffin embedded tissue section. The section was pre-treated using heat mediated antigen retrieval with sodium citrate buffer (pH 6.0). The section was then incubated with the antibody at room temperature and detected using an HRP conjugated compact polymer system. DAB was used as the chromogen. The section was then counterstained with haematoxylin and mounted with DPX.

STORAGE

Store at 4°C short term. For long term storage, store at -20°C, avoiding freeze/thaw cycles.

NOTE

For Research Use Only. Not for diagnostic, therapeutics, prophylactic or in vivo use.